



2022 CARBON RAIL 9.8 AND 9.9

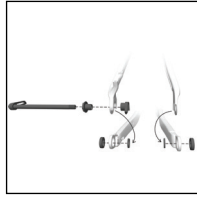
SERVICE MANUAL SUPPLEMENT

Rev 1 April 2022

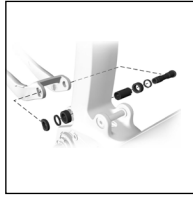
Contents



[Safety](#)



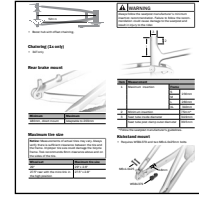
[Active Braking
Pivot \(ABP\)](#)



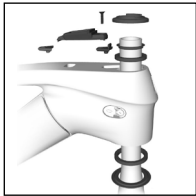
[Main pivot and
chainstay](#)



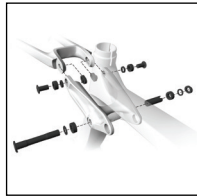
[Frame guards](#)



[Specifications](#)



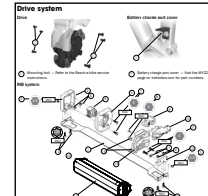
[Headset with
Knock Block](#)



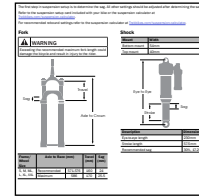
[Rocker pivot and
seat stay](#)



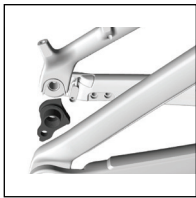
[Shock mounts](#)



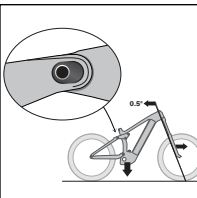
[Drive system](#)



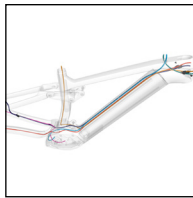
[Suspension](#)



[Dérailleur hanger](#)



[Adjust the
geometry](#)



[Cable routing](#)

Safety



WARNING

Tighten hardware properly

Always tighten hardware to the specified torque. Over-tightening hardware could deform or break the hardware or components. Under-tightening hardware could cause hardware or components to become loose. Either situation could damage the bicycle and result in injury to the rider.



WARNING

Re-apply threadlocker

All reused-fasteners with a pre-applied threadlocker must be cleaned with isopropyl alcohol and have new threadlocker applied before re-assembly. If a threadlocker is not applied, the fasteners may loosen, which could damage the bicycle and result in injury to the rider.

Legend



Apply grease



Do not apply grease



Apply threadlocker

Nm

Torque



Hex tool size



Torx tool



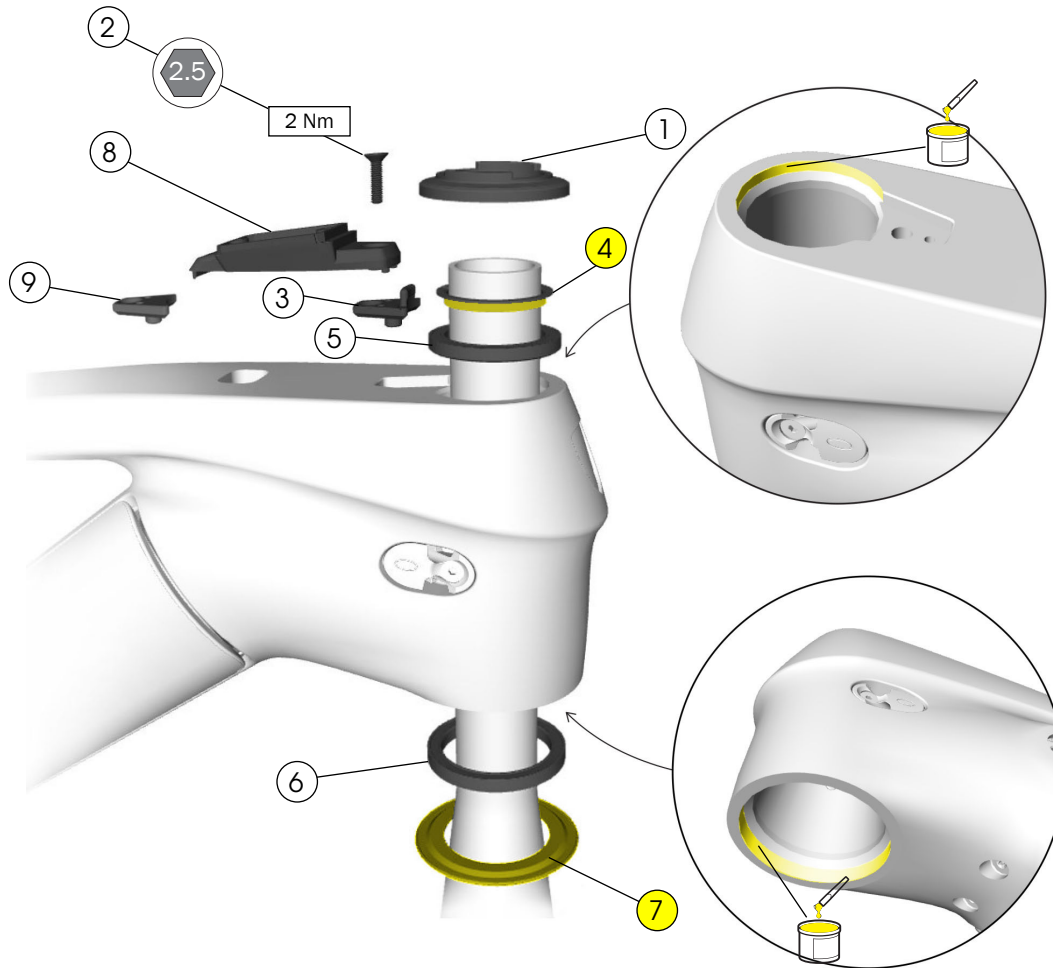
Drift size



Zip tie

Headset with Knock Block

Notice: If the Knock Block chip is removed, the Knock Block replacement chip must be installed in its place.

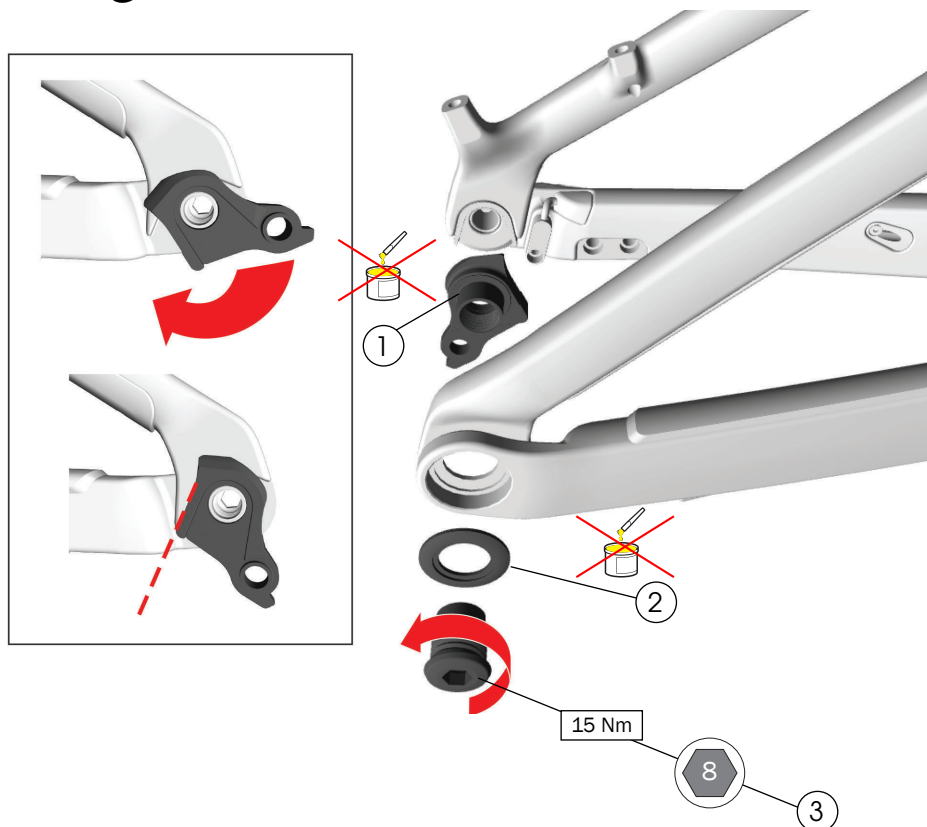


- | | |
|--|-------------|
| ① Upper bearing cover | } - 5252161 |
| ② Chip bolt | |
| ③ Knock Block chip - W532763 | |
| ④ Compression ring - W532842 | |
| ⑤ Upper bearing - W531676 | |
| ⑥ Lower bearing, 1.8" diameter. - W5269809 | |
| ⑦ Crown race, for 1.8" diameter lower bearing - W5283203 | |
| ⑧ Display mount - W5254476 | |
| ⑨ Knock Block replacement chip - W1048249 | |

Tools

- 2.5 mm hex tool
- Grease

Dérailleur hanger



① Dérailleur hanger

② Washer

③ Bolt

- W5271425

Tools

- 8 mm hex tool
- Torque wrench (left-hand thread) with 8 mm hex bit



WARNING

Do not apply grease to the derailleur hanger or bolt. Only apply grease to the thru axle.

NOTICE: Do not over-tighten. Over-tightening the bolt could cause the hanger to break.

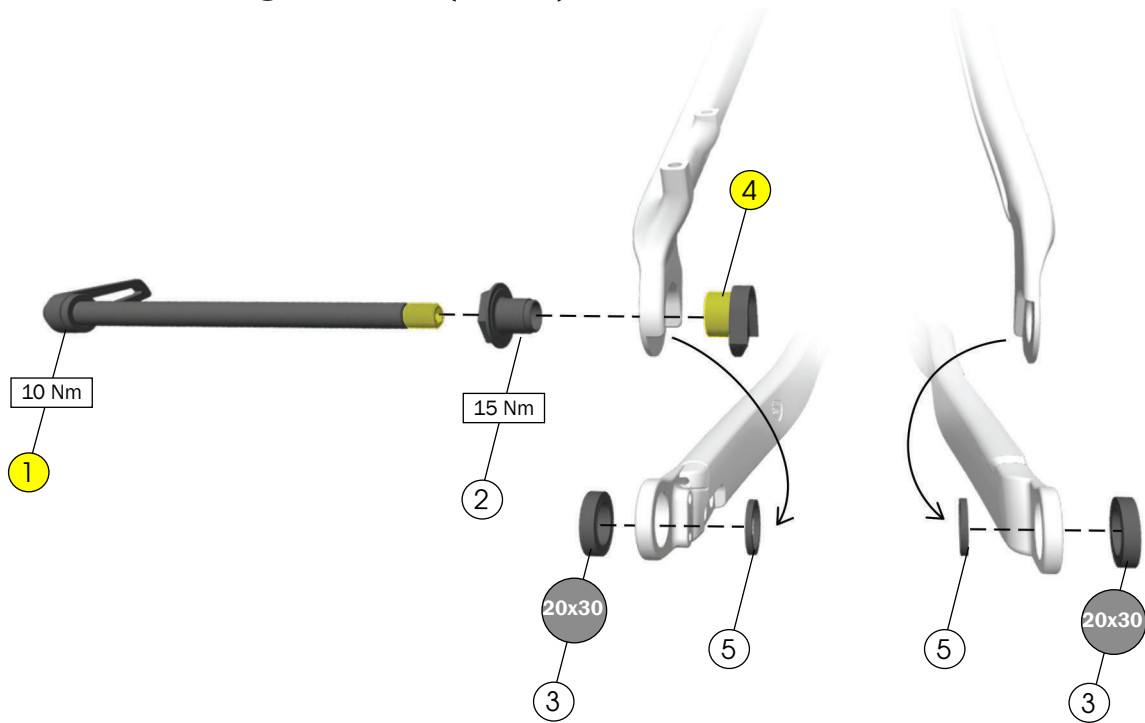
This bicycle frame is designed to use a Universal Derailleur Hanger (UDH).

For additional information about the UDH, refer to the SRAM user manual at www.sram.com.

NOTICE: The thru axle must be compatible with a UDH and must be M12x1.0 with a 12.7 mm thread.

NOTICE: The washer is frame-specific. Install only the washer compatible with your frame.

Active Braking Pivot (ABP)



- ① Thru axle – W583470
- ② Non-driveside dropout – W583420
- ③ Bearings – W583424
- ④ Dropout axle – W583419
- ⑤ Spacers – W583422

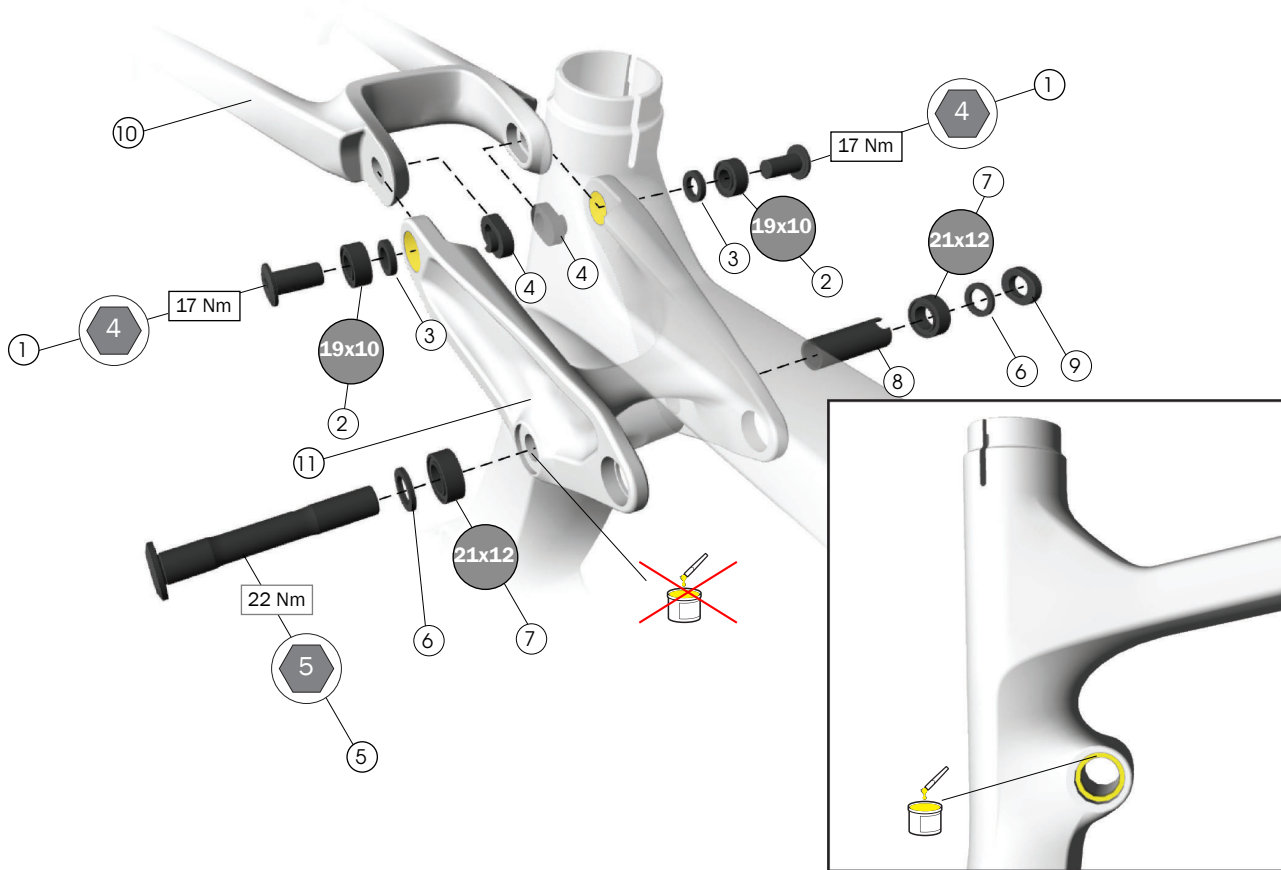
- 599911

Tools

- Bearing press, 20x30 drift
- Cassette lockring
- Grease

NOTICE: The thru axle must be compatible with a UDH and must be M12x1.0 with a 12.7 mm thread.

Rocker pivot and seat stay



- ① Bolts – W579296
 - ② Bearings – W529224
 - ③ Spacers – W529969
 - ④ Mino link – W529223
 - ⑤ Rocker axle – W535469
 - ⑥ Spacers – W290057
 - ⑦ Bearings – W586543
 - ⑧ Seat tube pivot sleeve – W310155
 - ⑨ Nut – W311582
 - ⑩ Seatstay – 30893. Search trekbikes.com to find the colour-matched part for your bike.
 - ⑪ Rocker link – 30969. Search trekbikes.com to find the colour-matched part for your bike.
- } – 599910

Tools

- Bearing press, 19x10 and 21x12 drifts
- 4mm and 5mm hex wrenches
- Torque wrench with 4mm and 5mm hex bits

Seat tube pivot

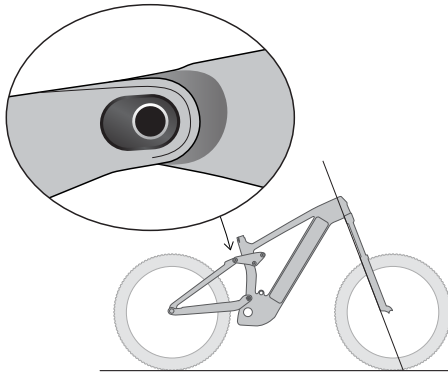
Important: Press in driveside bearing first.

Adjust the geometry

Flip the Mino link in the seatstay pivot to change the bike's geometry to fit your riding style or the terrain.

Notice: If using a 29" wheel up front and a 27.5" wheel in the back, the minolink must be in the high position.

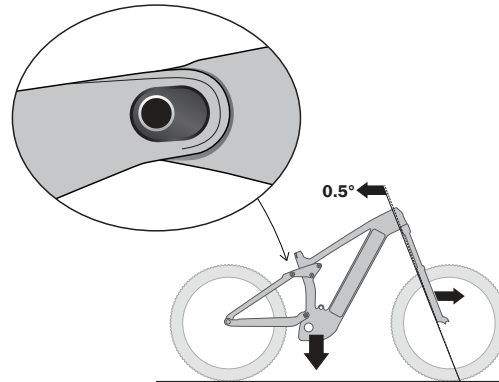
Steeper head tube angle



Mino link in the high position

- Pulls in the front fork for quicker steering
- Raises the bottom bracket for improved climbing

Slacker head tube angle



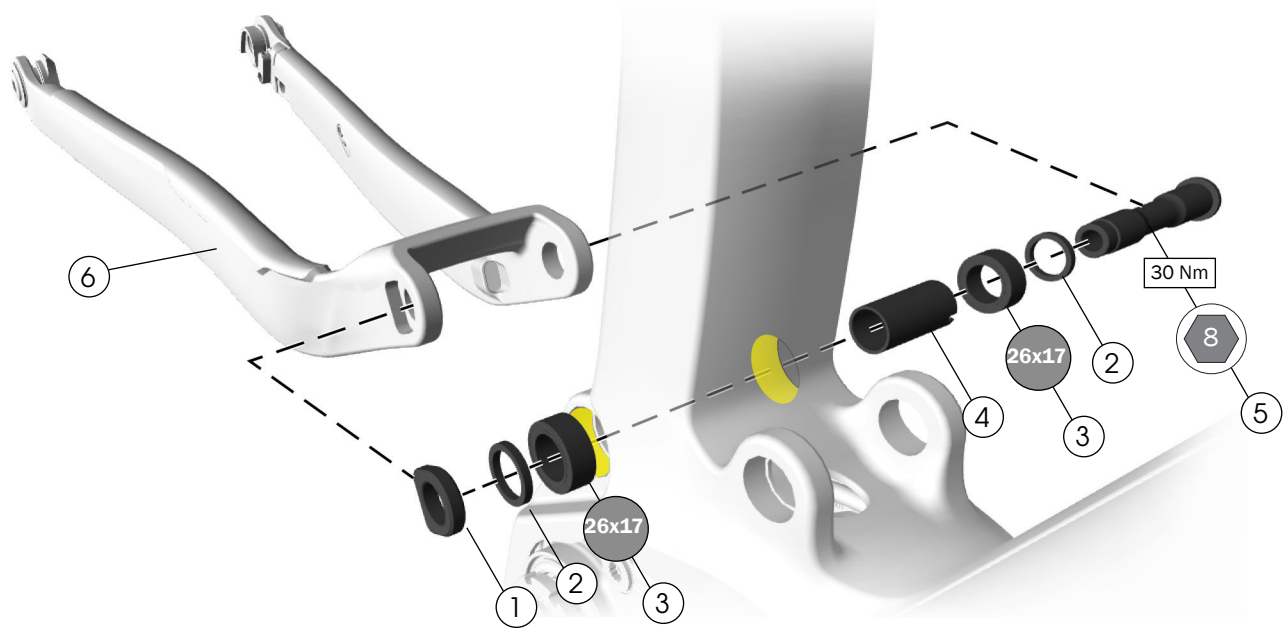
Mino link in the low position

- Pushes the head tube angle back 0.5° and pushes out the front fork for slower steering that is more stable at high speed
- Lowers the bottom bracket up to 9 mm for more stability

Tools

- 5 mm hex tool
1. With the bike on the ground, loosen and remove one Mino Link chip.
 2. Loosen and remove the other Mino Link chip.
 3. Position the bike:
Mino Link high: Lift the bike by the seat tube. This will pull the rear triangle up and forward.
Mino Link low: With the chips removed, gravity will pull the rear triangle down and back.
 4. Place one Mino Link chip into the desired position. Slightly tighten the Mino Link bolt.
 5. Install the other Mino Link chip into the same position. Slightly tighten the Mino Link bolt.
 6. Torque both Mino Link bolts to 17Nm.

Main pivot and chainstay



- ① Nut – W584134
 - ② Spacers – W440921
 - ③ Bearings – W302025
 - ④ Main pivot sleeve – W500592
 - ⑤ Main pivot axle – W601376
 - ⑥ Chainstay – 30891. Search trekbikes.com to find the colour-matched part for your bike.
- 599909

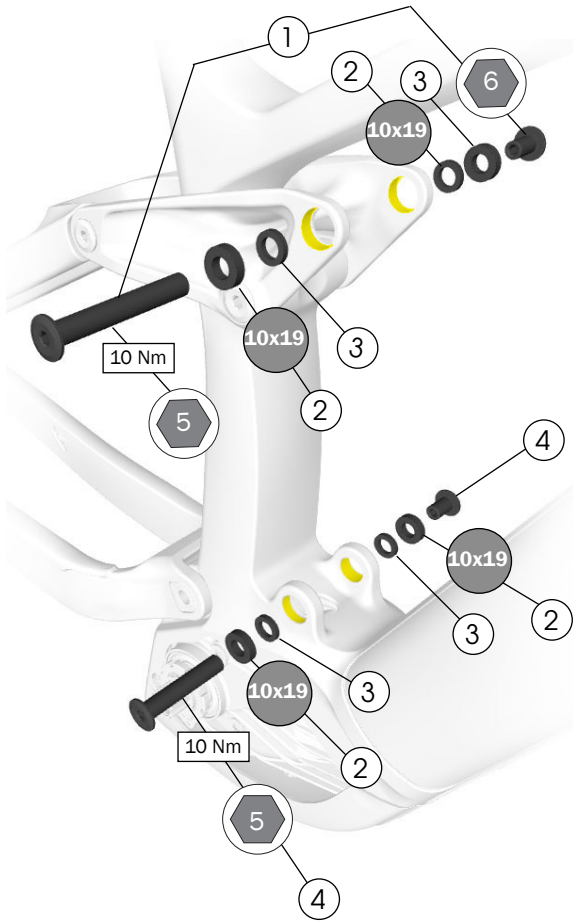
Tools

- Bearing press, 26x17 drift
- 8 mm hex tool
- Torque wrench with 8mm hex bit
- Grease

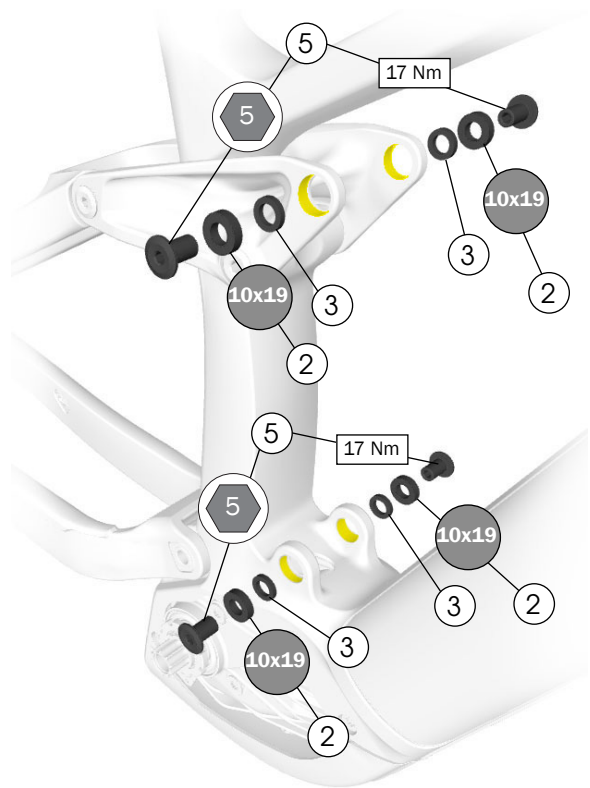
Important: Press in the driveside bearing first.

Shock mounts

Standard



Thru shaft

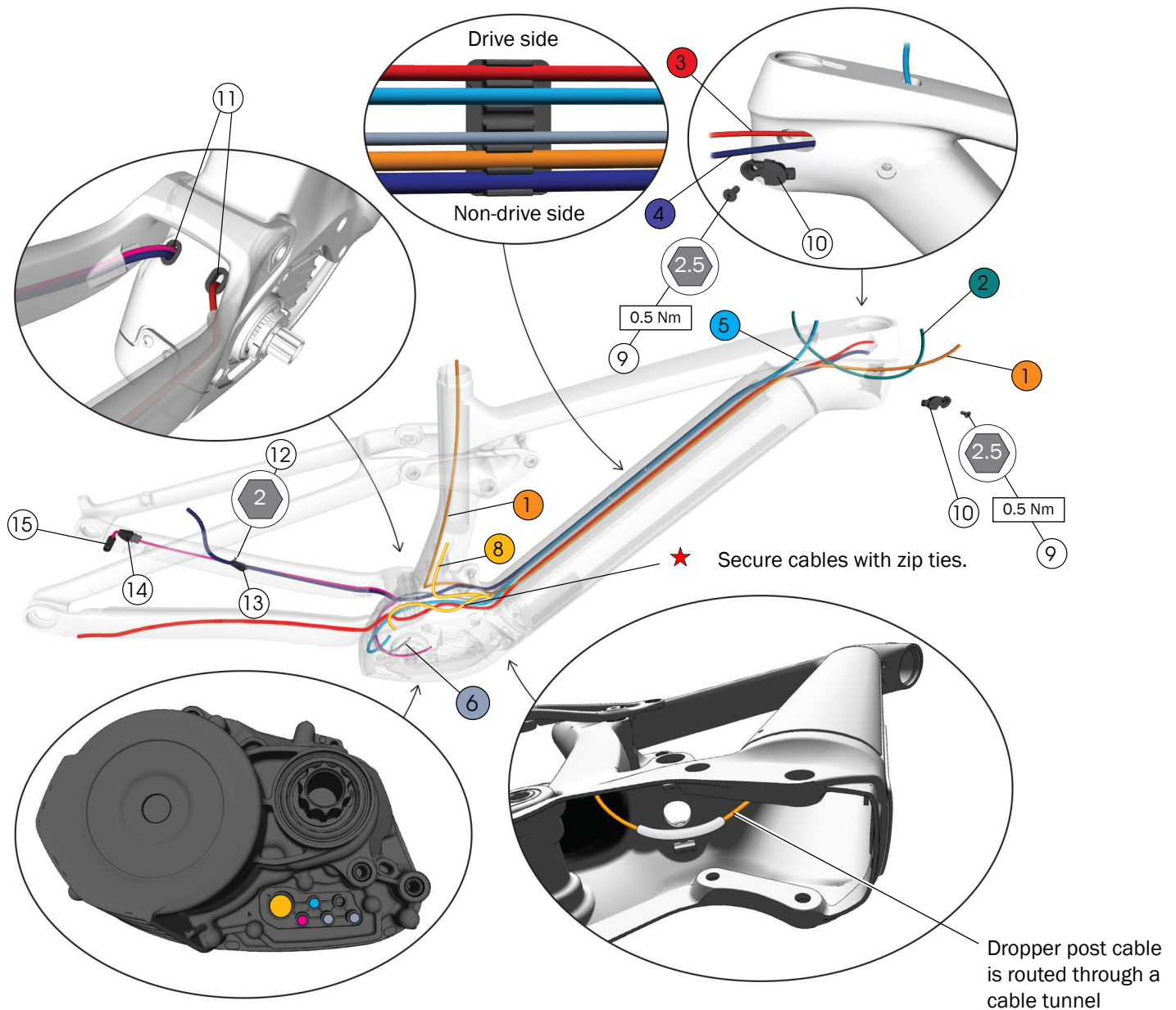


Tools

- Bearing press, 10x19 drift
- 5mm and 6mm hex wrenches
- Torque wrench with 5mm and 6mm hex bits

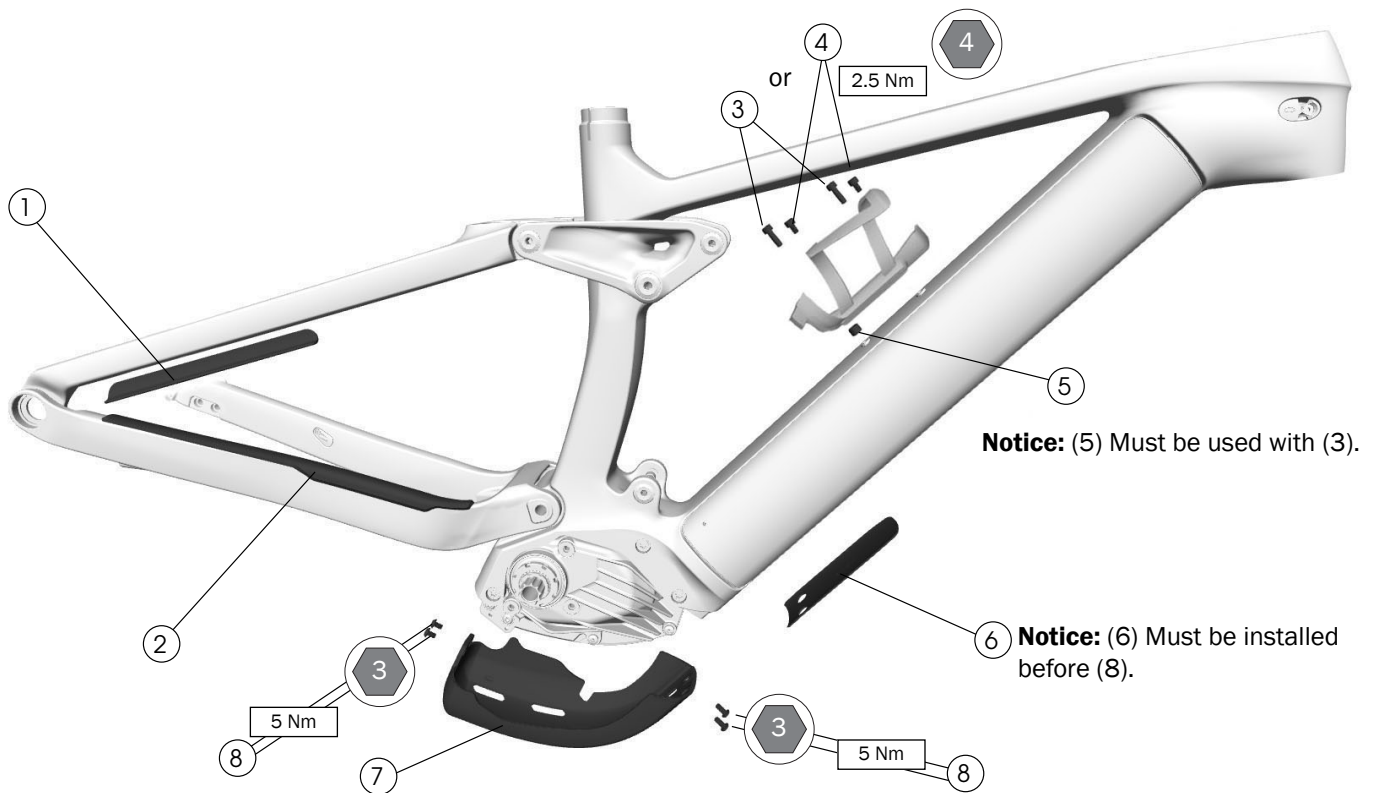
- ① Standard upper shock mount bolt and end cap – 5258209
- ② Bearings – W293466
- ③ Spacers – W529969
- ④ Standard lower shock mount bolts – 5258210
- ⑤ Thru shaft shock mount bolts – W600630

Cable Routing



- ① Dropper post
- ② Display to remote
- ③ Derailleur
- ④ Rear brake
- ⑤ Display to drive unit
- ⑥ Front light (aftermarket option)
- ⑦ Speed sensor
- ⑧ Battery power
- ⑨ Flat head screws – W532763
- ⑩ Cable guides – W519232
- ⑪ Cable exit grommets – W5255861
- ⑫ Countersink screw – W524884
- ⑬ Grommet – W543605
- ⑭ Speed sensor chainstay plug – W587873
- ⑮ Speed sensor – 5284750
- ★ Zip tie

Frame guards



- ① Seatstay guard – W5255862
- ② Chainstay guard – W587594
- ③ Screws (S and M frames only) – W596821
- ④ Bolts (L and XL frames only) – W549307
- ⑤ Cage spacer (S and M frames only) – W5256157
- ⑥ Down tube guard – W590604
- ⑦ Drive unit guard – W5253938
- ⑧ Screws – W549305

Adhesive guards

Use isopropyl alcohol to clean the frame surface where the chainstay (2) and seatstay guards (1) attach. Wait for the alcohol to dry before applying the guards.

Notice: Do not clean the entire frame with isopropyl alcohol. Isopropyl alcohol could damage the paint.

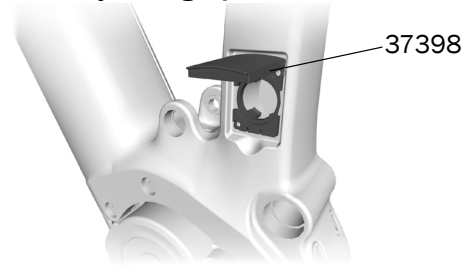
Drive system

Drive unit and mounting bolts



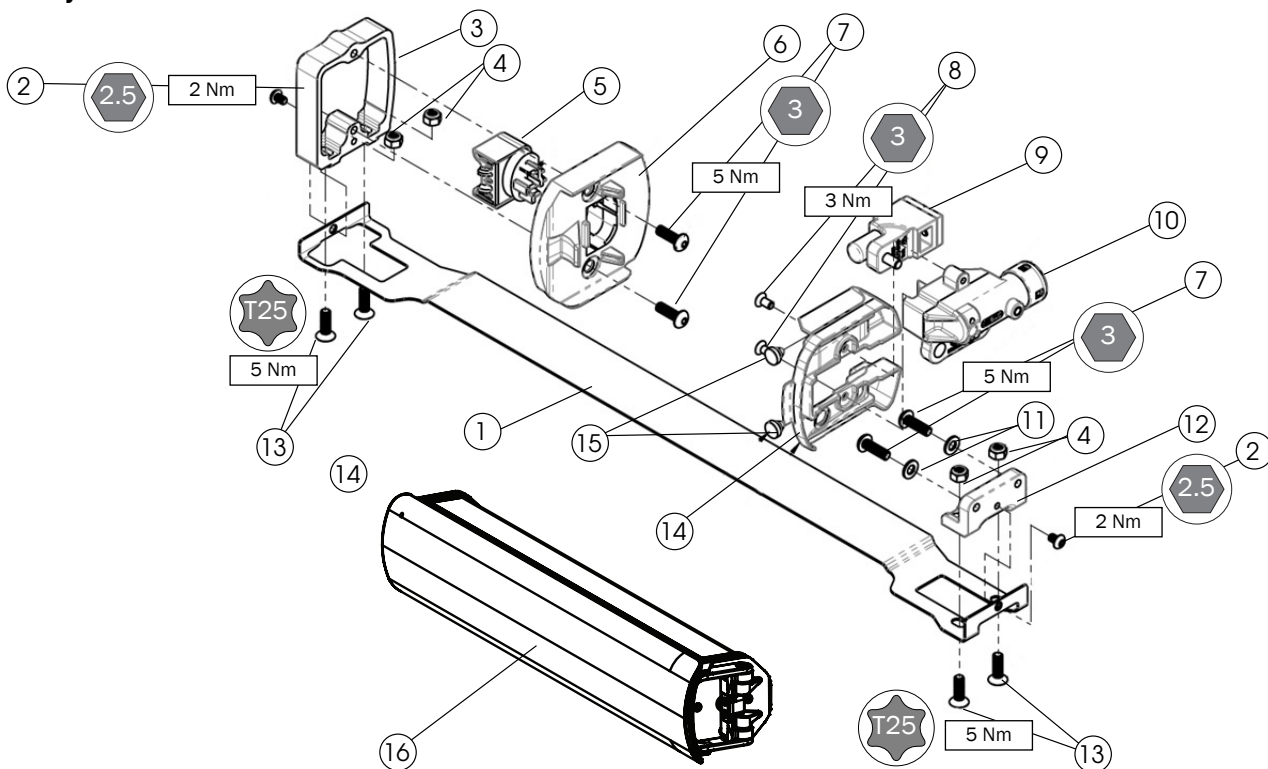
Service technicians: Refer to your Bosch e-bike service information. **Bike owners:** Contact your local Trek retailer.

Battery charge port cover



Search trekbikes.com to find the colour-matched part for your bike.

RIB system



① Alignment plate – W525805

② Screws

④ Locknuts

⑦ Screws

⑧ Countersunk bolts

⑬ T25 security screws

⑪ Washers

③ Lower docking bracket

⑫ Upper docking bracket

– 5257257

– 5277571

⑤ Battery connection plug – **Service technicians:** Refer to your Bosch e-bike service information. **Bike owners:** Contact your local Trek retailer.

⑥ Lower battery mounting plug

⑭ Upper lock cover

⑮ Bumpers

⑨ Ejector assembly – 579324

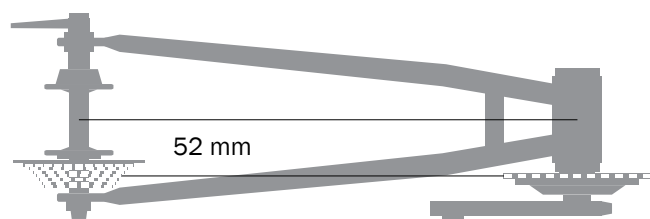
⑩ Lock assembly – W562311

⑯ Battery cover – Search trekbikes.com to find the colour-matched part for your bike.
Small frame: 37359
M, L and XL frames: 37360

– 5256256

Specifications

Chainline (1x only)



- Boost hub with offset chainring.

Chainring (1x only)

- 34T only

Rear brake mount



Minimum	Maximum
180mm, direct mount	Adaptable to 203 mm

Maximum tyre size

Notice: Measurements of actual tyres may vary. Always verify there is sufficient clearance between the tyre and the frame. Improper tyre size could damage the bicycle frame. Trek recommends 6 mm clearance above and on the sides of the tyre.

Wheel set	Maximum tyre size
29"	29" x 2.6"
27.5" rear with the mino link in the high position	27.5" x 2.8"

Water bottle fit on small frames

Rail 9.8: Use Bontrager Voda 15 bottle

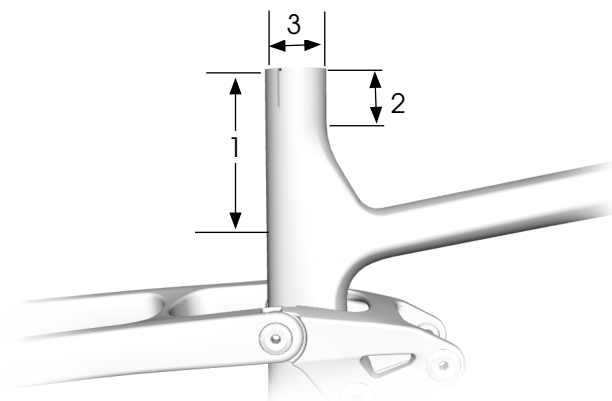
9.9 with AirWiz: There is not enough clearance to fit a water bottle.

Seat post



WARNING

Always follow the seat post manufacturer's minimum insertion recommendation. Failure to follow the recommendation could cause damage to the seatpost and result in injury to the rider.

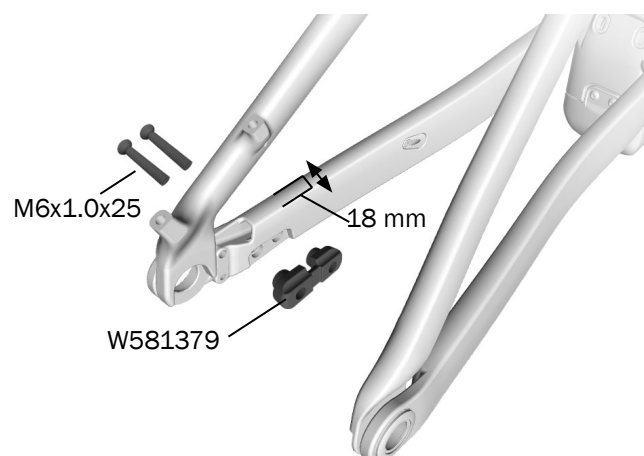


Item	Measurement	Frame
1	Maximum insertion	S
		M
		L
		XL
2	Minimum insertion	75 mm*
3	Seat tube inside diameter	34.9 mm
	Seat tube post clamp outer diameter	39.5 mm

*Follow the seatpost manufacturer's guidelines.

Kickstand mount


- Requires kickstand mounting bracket W581379 and two M6x1.0x25 mm bolts



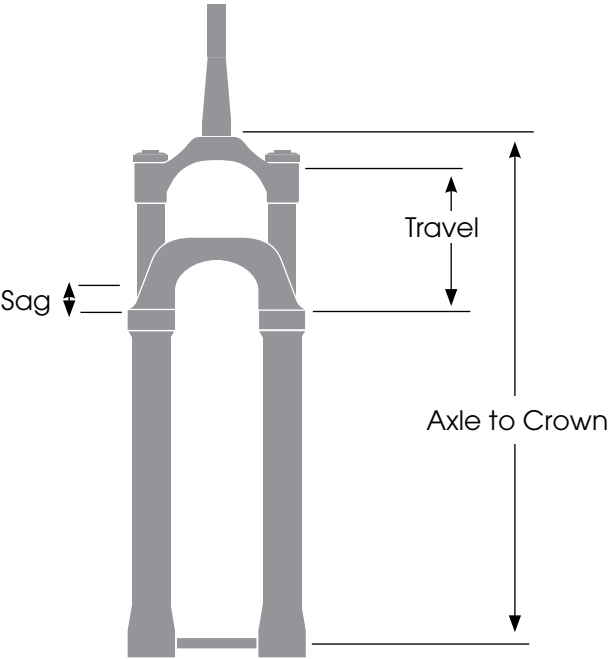
Suspension

The first step in suspension setup is to determine the sag. All other settings should be adjusted after determining the sag. Refer to the suspension setup card included with your bike or the suspension calculator at Trekbikes.com/suspension-calculator. For recommended rebound settings refer to the suspension calculator at Trekbikes.com/suspension-calculator.

Fork



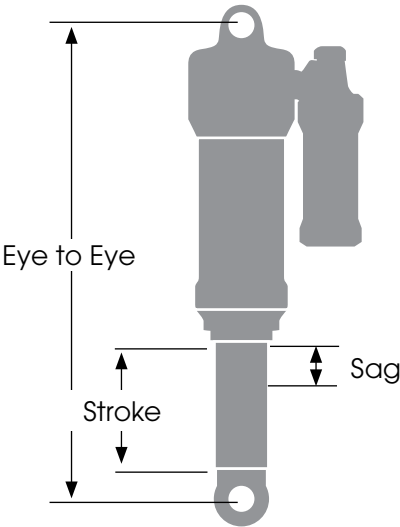
WARNING
Exceeding the recommended maximum fork length could damage the bicycle and result in injury to the rider.



Frame/ Wheel Size	Axle to Crown (mm)		Travel (mm)	Sag (mm)
	Recommended			
S, M, ML, L, XL, XXL		571-576	160	24
	Maximum	586	170	25.5

Shock

Mount	Width
Bottom mount	54 mm
Top mount	40 mm



Description	Dimension
Eye-to-eye length	230 mm
Stroke length	57.5 mm
Recommended sag	30%, 17.25 mm