



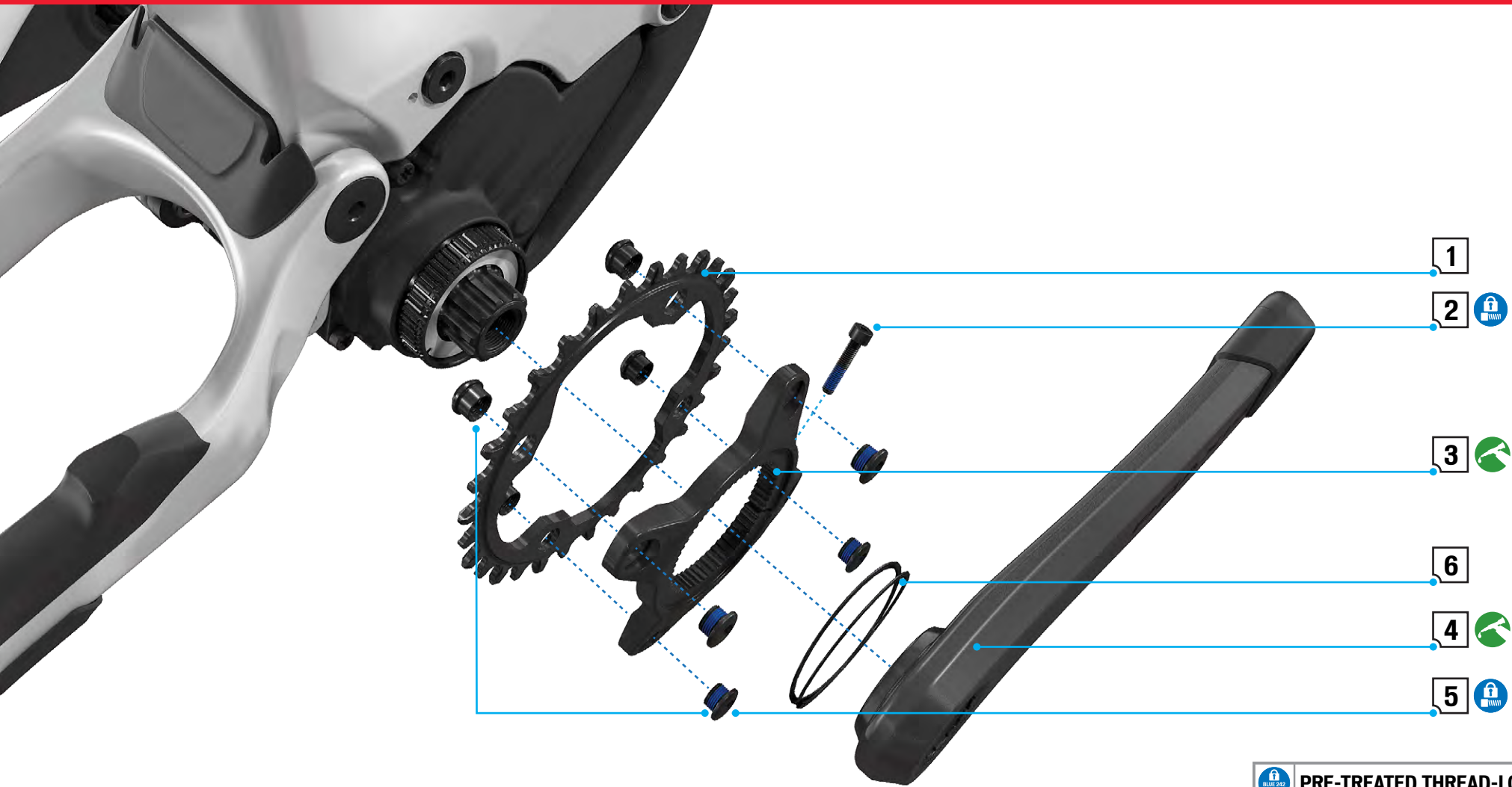
2020
LEVO_{SL}
SMALL PARTS - SCHEMATIC
CARBON FRAME





INDEX

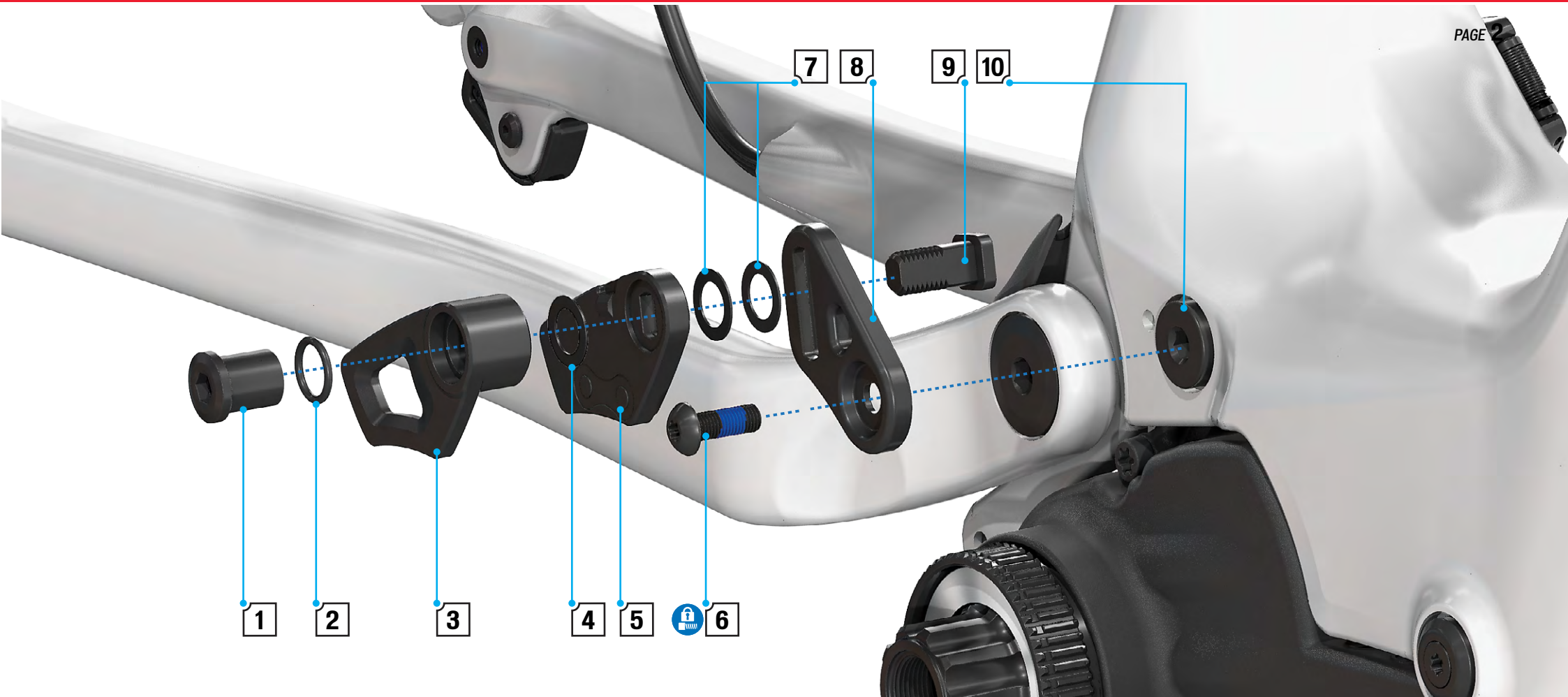
- 1
- 2
- 3
- 4
- 5
- 7
- 7
- 8
- 8
- 9
- 9
- 10
- 11
- 11
- 12
- 12
- 13
- 14
- 15



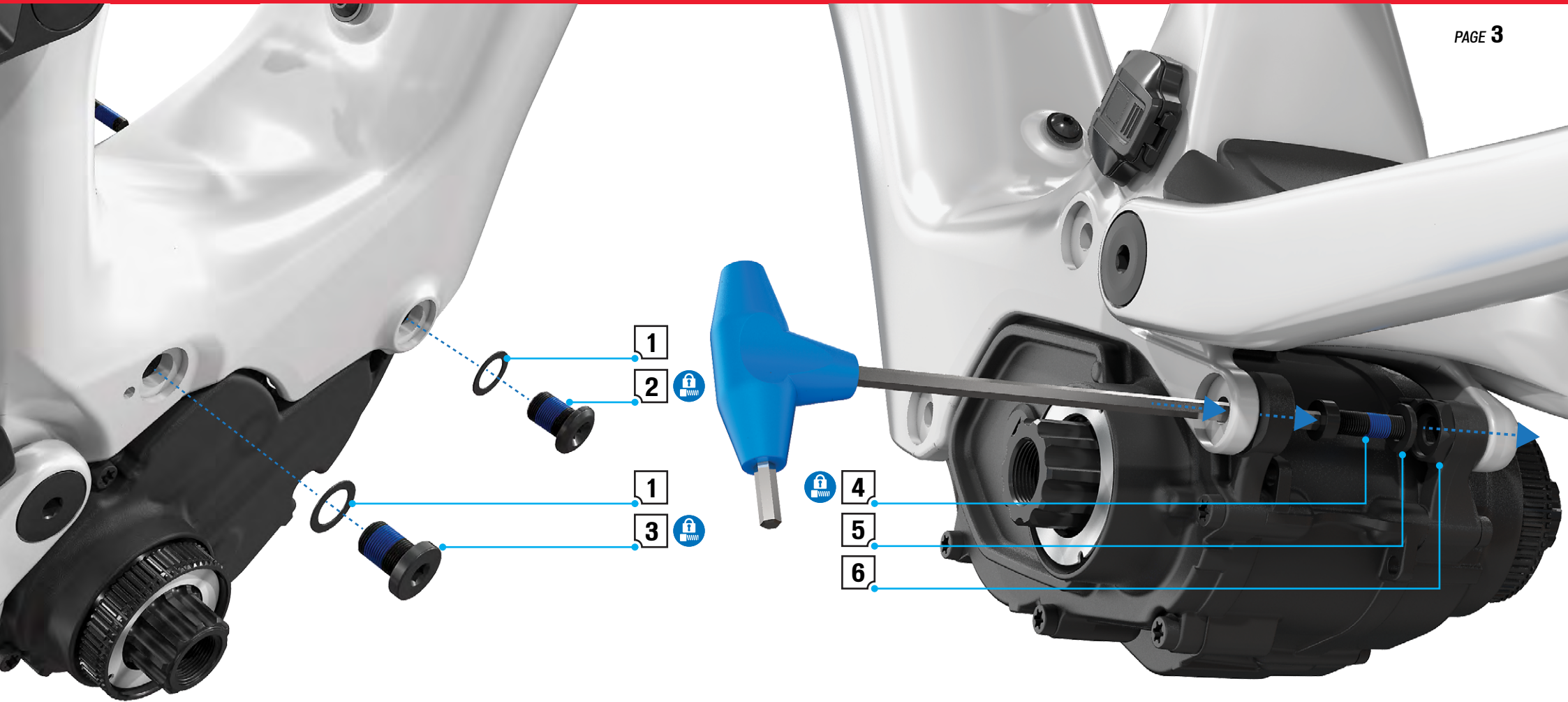
 **PRE-TREATED THREAD-LOCK COMPOUND**

 **APPLY GREASE**

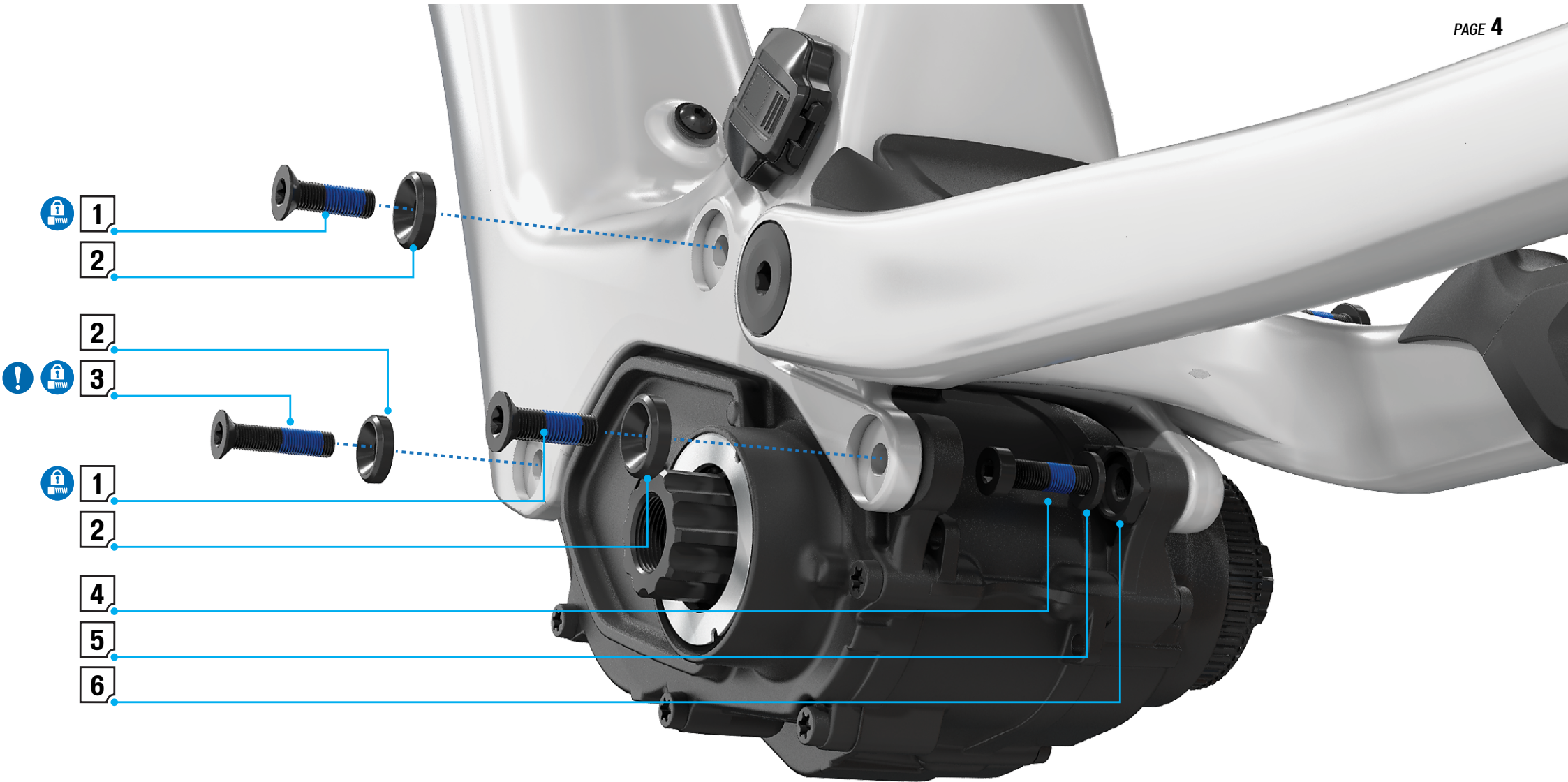
#	PART NAME	PART NUMBER	QTY	SPEC	TOOL	TORQUE (Nm / in-lbf)	COMMENT
1	Chain ring	S191400002	1	30 T	NA	NA	Spider Bolt Circle Diameter 94 mm - 30 T.
2	Spider bolt	S199900074	1	M4 x 20 mm	3 mm HEX	5 / 44	Pre-treated thread locking compound
3	Spider		1	NA	NA	NA	Grease the interface between the motor and spider.
4	Cranks (crank bolt)	VARIOUS SIZES	2	NA	8 mm HEX	50 / 443	CARBON 165 mm (S211600009) 170 mm (S211600010) ALLOY 165 mm (S201600001) 170 mm (S201600002)
5	Chain ring bolts	S200500001	4	M8 x 7 mm Socket Head	5 mm HEX	10 / 89	Pre-treated thread locking compound.
6	Spider retaining ring	S191600013	1	50 mm 48.5 mm x 1.5 mm	NA	NA	Use a flat head screwdriver or a pick to remove the retaining ring.



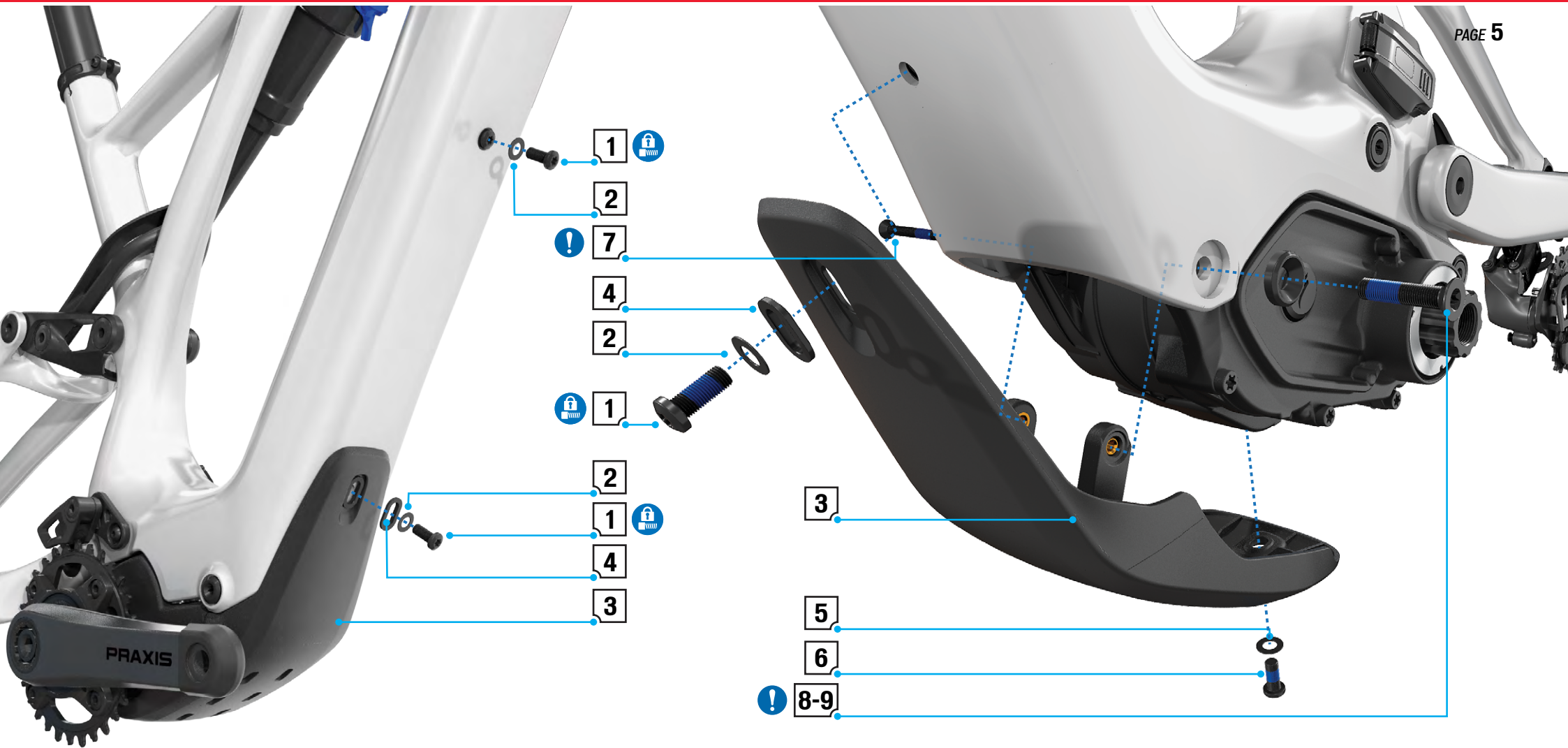
#	PART NAME	PART NUMBER	QTY	SPEC	TOOL	TORQUE (Nm / in-lbf)	COMMENT
1	Nut	CHG LEVO SL CHAINGUIDE S201200002	1	M8 X 10 mm	5 mm HEX	4.5 / 40	Custom chain guide nut
2	O Ring		1	9 mm ID x 1.5 mm THK	NA	NA	Use light grease
3	Chain guide outer plate		1		NA	NA	
4	Spacer		1	8.1 mm ID x 15 mm OD 1 mm THK	NA	NA	
5	Chain guide inner plate		1		NA	NA	
6	Mounting bolt		1	M5 x 14 mm x 0.8 P	T25	NA	
7	Washer		2	M8 8.2 ID x 13 OD x 0.5 mm THK SST	NA	NA	
8	Chain Guide back plate		1		NA	NA	Align the plate on the frame with the pin dowel inserted into the locator hole.
9	Chain guide slotted screw		1	CUST M8 x 1.0 SLOT	NA	NA	Custom chain guide bolt
10	Motor mounting bolt		1		NA	NA	See Motor Mounting bolts for details



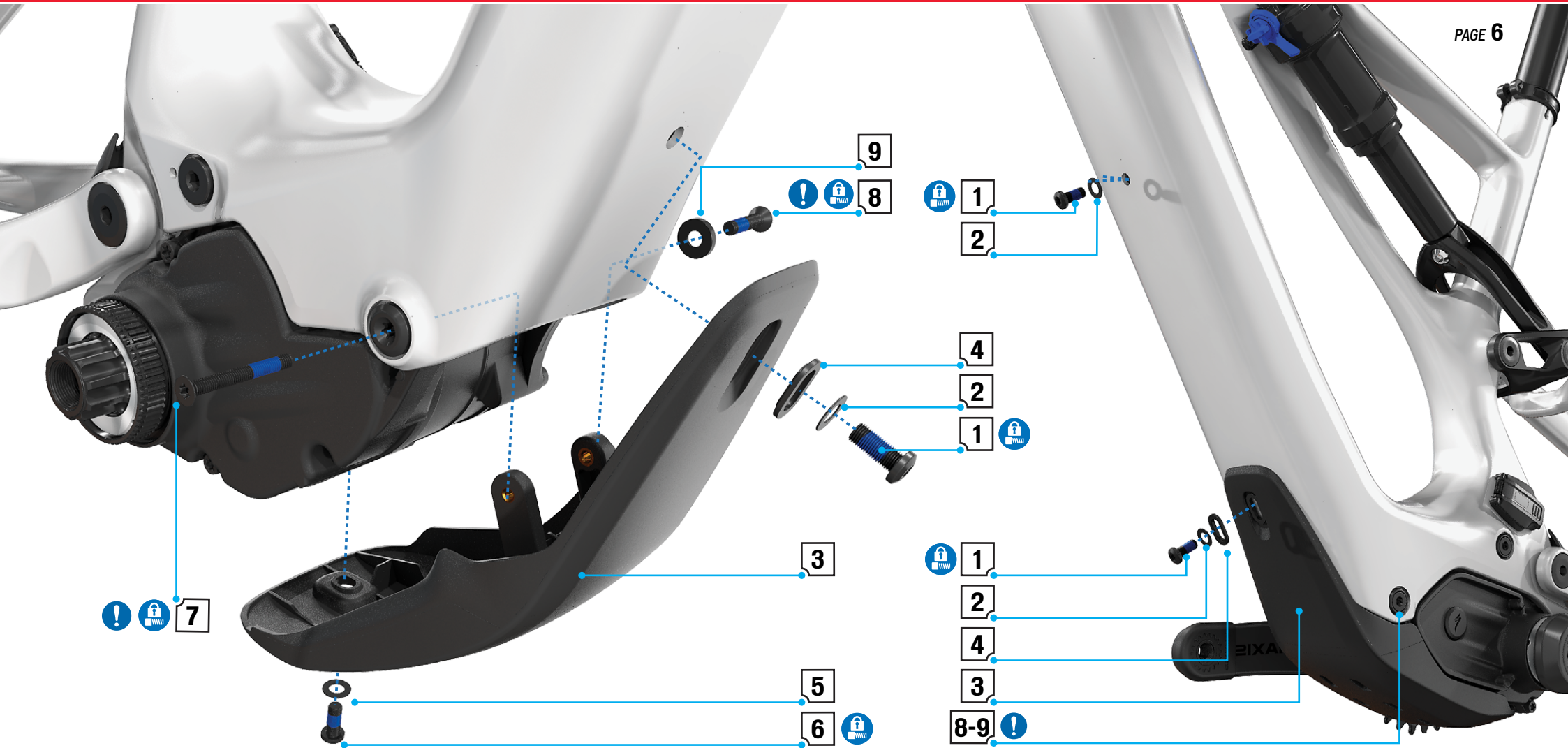
#	PART NAME	PART NUMBER	QTY	SPEC	TOOL	TORQUE (Nm / in-lbf)	COMMENT
1	Motor bolt washer	S194200050	2	M10 x 11 ID x 16 OD x 0.5 mm THK	NA	NA	Custom countersunk washer.
2	Motor bolt		1	CUST M10 x 25 mm x 1.0 p	T30	17 / 150	Pre-treated thread locking compound. Motor cover bolt mounts into this screw
3	Motor bolt (chain guide)		1	CUST M10 x 14 mm x 1.0 p	5 mm Hex	17 / 150	Custom bolt, chain guide bolt mounts into this screw
4	Motor bolt		1	M6 x 22 mm x 1.0 p	4 mm Hex	10 /89	Mount bolt through the NDS motor mounting bolt thread. (use a long reach hex socket for torquing)
5	Motor bolt Washer		2	M6 x 6.4 ID x 12 OD 1.6 THK	NA	NA	
6	Motor mount nut		1	CUST M10 x 9.5 mm x 0.1 p	15 mm Spanner		Custom motor nut



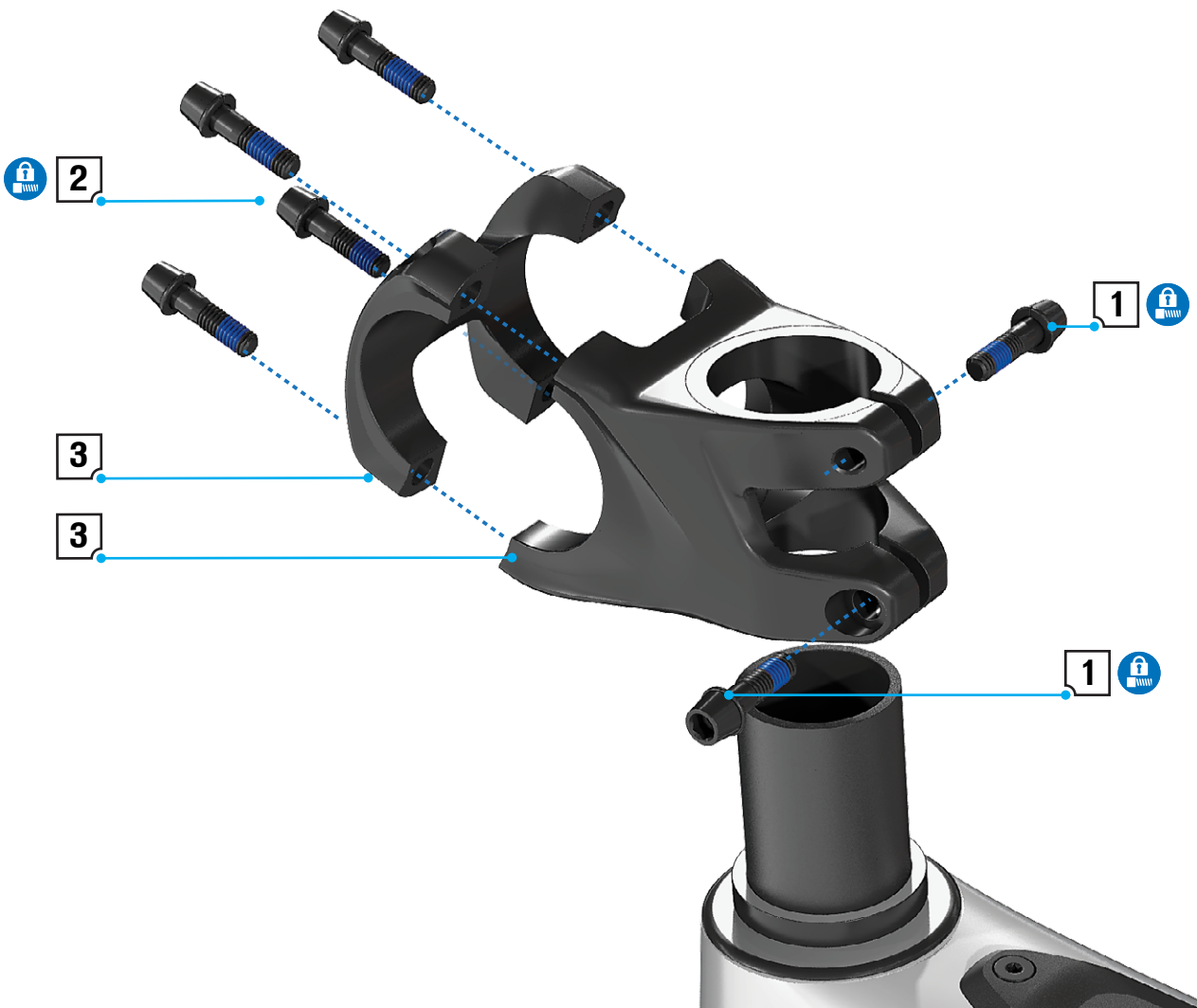
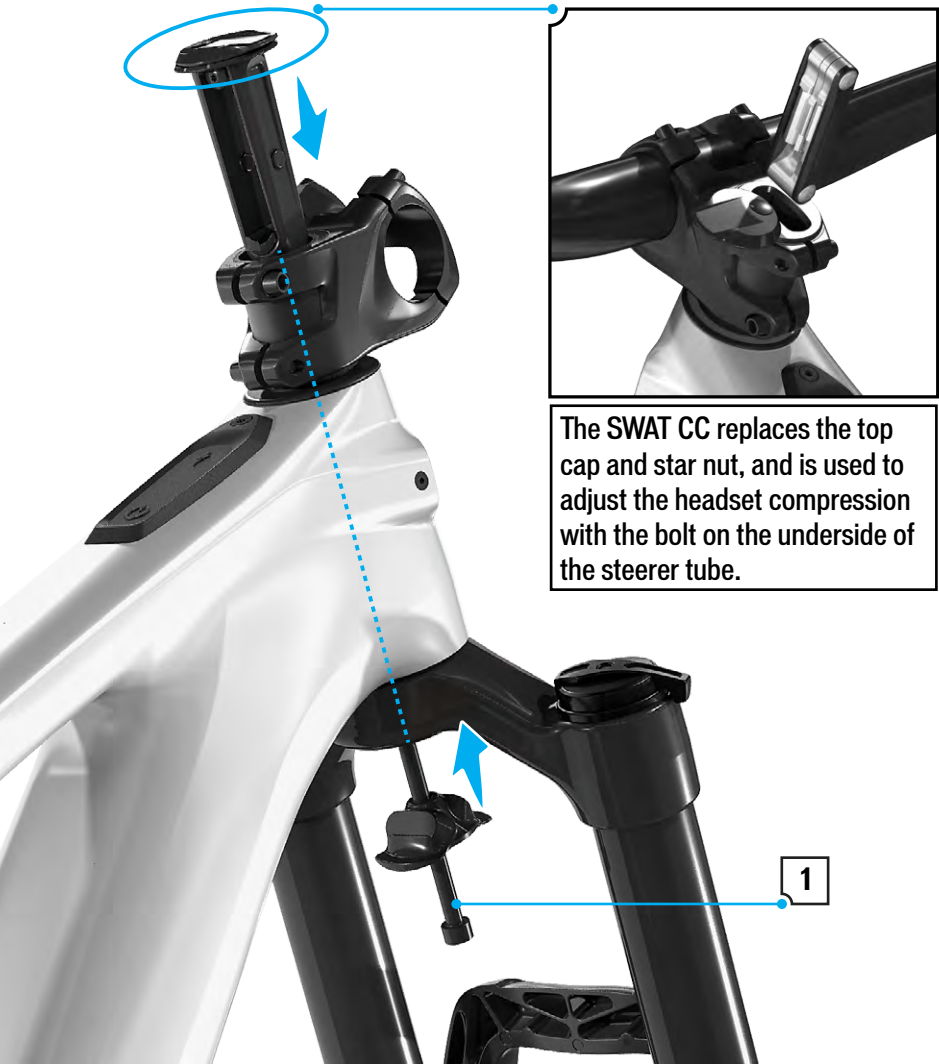
#	PART NAME	PART NUMBER	QTY	SPEC	TOOL	TORQUE (Nm / in-lbf)	COMMENT
1	Motor bolt	S194200050	2	M6 x 20 mm x 1.0	T30	10 / 89	Pre-treated thread locking compound.
2	Motor bolt Washer		3	M6 x 6.4 ID x 16 OD x 4 mm THK CS	NA	NA	Custom countersunk washer
3	Motor bolt		1	M6 x 28 mm x 1.0	T30	10 / 89	NOTE: Bolt holds both the motor and the motor cover. The bolt must be installed after the motor cover is place in position.
4	Motor bolt		1	M6 x 22 mm x 1.0	4 mm Hex	10 / 89	Mount bolt through the NDS motor mounting bolt thread. (See Motor Mounting bolts drive side for details) (use a long reach hex socket for torquing)
5	Motor mount nut		2	Cust M10 x 9.5 mm x 0.1 p	15 mm Spanner		Custom motor nut. (See Motor Mounting bolts drive side for details)



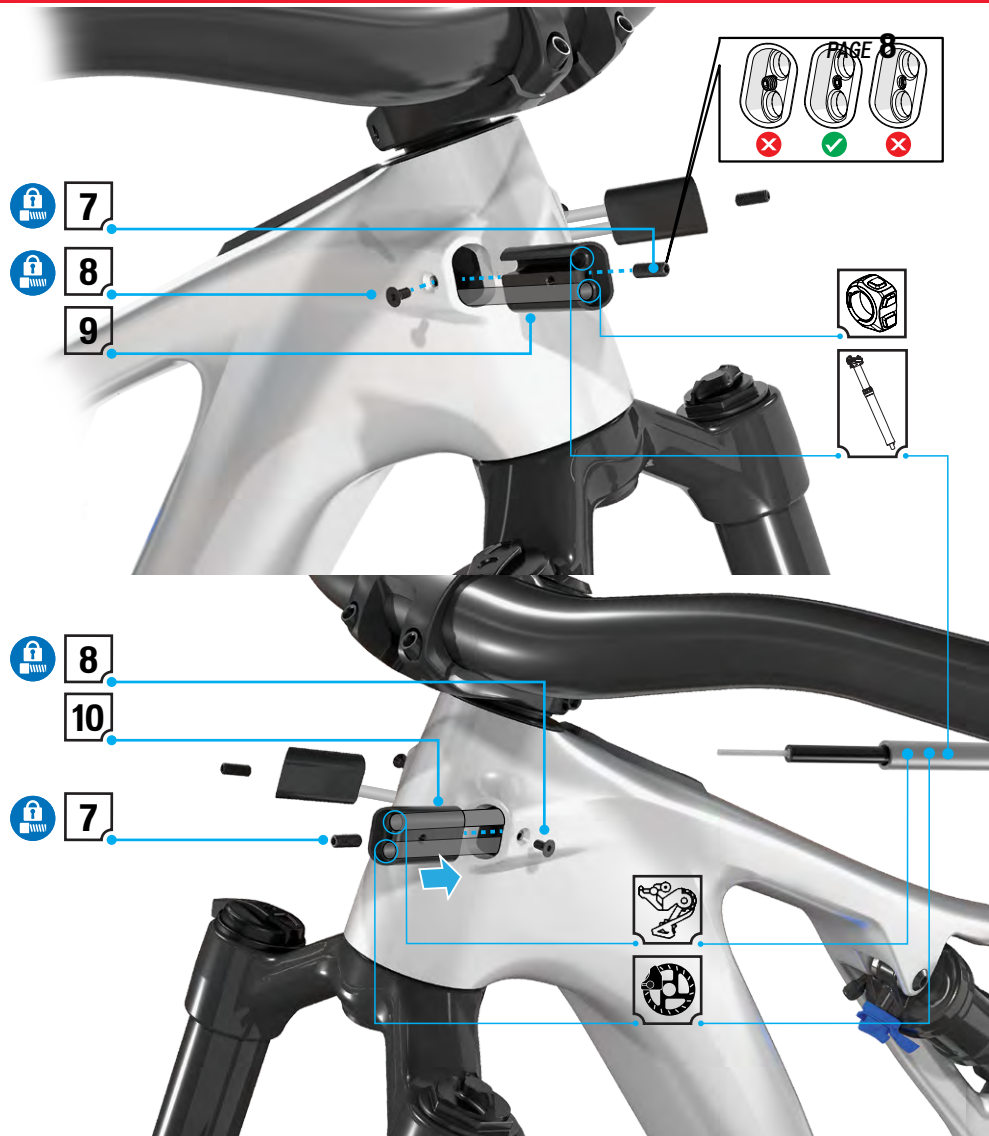
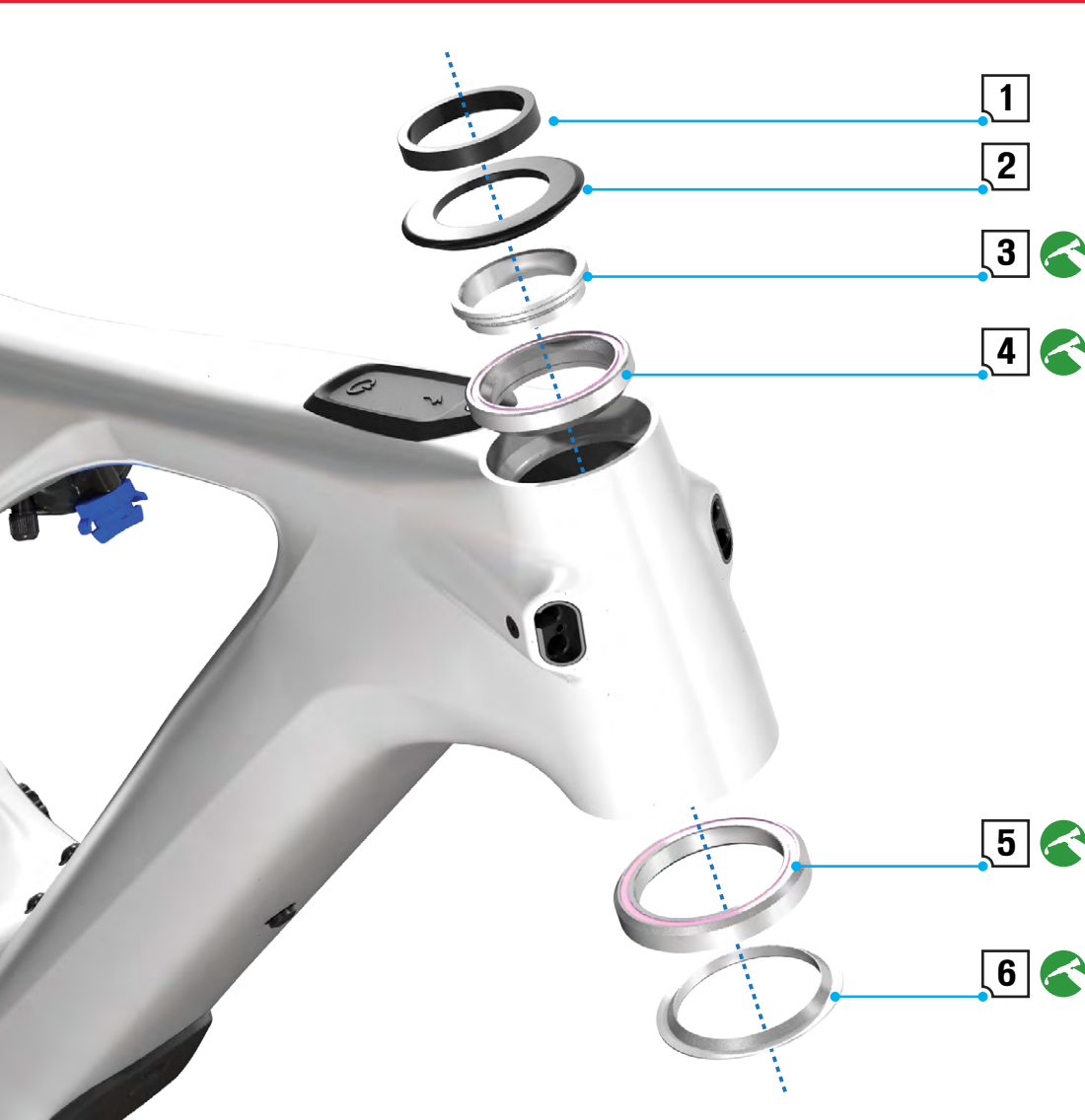
#	PART NAME	PART NUMBER	QTY	SPEC	TOOL	TORQUE (Nm / in-lbf)	COMMENT
1	Battery bolt	S193400002	2	M6 x 14 mm	T25	3 / 27	NOTE: lower bolt is inserted through the rock guard. Pre-treated thread locking compound.
2	Battery washer		2	M6 6.4 ID X 12 OD X 0.5 THK	NA	NA	
3	Rock guard	CARBON FRAME S194200049	1	NA	NA	NA	
4	Rock guard washer slotted		1	M6 SLOT HOLE 6.4 ID X 12 OD X 1.5 THK	NA	NA	
5	Rock guard washer		1	M6 6.4 ID X 12 OD X 0.5 THK	NA	NA	Pre-treated thread locking compound.
6	Rock guard bolt		1	BUTTON HEAD M6 x 14 mm x 1	T25	2.5 / 22	Pre-treated thread locking compound.
7	Rock guard bolt		1	FLAT HEAD M4 x 35 mm x 0.7	T20	2.5 / 22	NOTE: Inserts into motor mounting bolt. Use thread lock.
8-9	Motor mount bolt and washer	See motor mounting bolts					



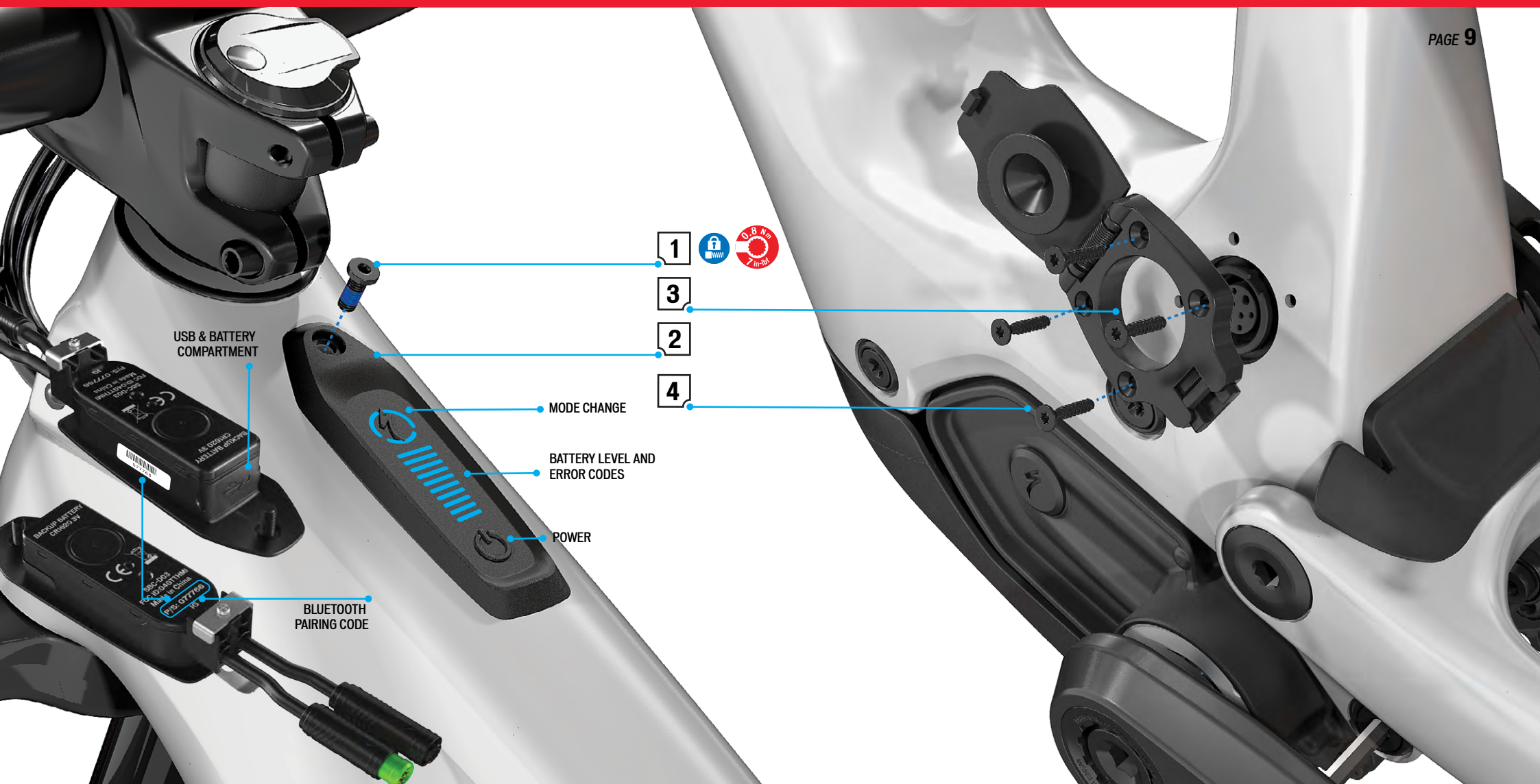
#	PART NAME	PART NUMBER	QTY	SPEC	TOOL	TORQUE (Nm / in-lbf)	COMMENT
1	Battery bolt	S193400002	2	M6 x 14 mm	T25	3 / 27	NOTE: lower bolt is inserted through the rock guard. Pre-treated thread locking compound.
2	Battery washer		2	M6 6.4 ID X 12 OD X 0.5 THK	NA	NA	
3	Rock guard	CARBON FRAME S194200047	1	NA	NA	NA	
4	Rock guard washer slotted		1	M6 SLOT HOLE 6.4 ID X 12 OD X 1.5 THK	NA	NA	
5	Rock guard washer		1	M6 6.4 ID X 12 OD X 0.5 THK	NA	NA	Pre-treated thread locking compound.
6	Rock guard bolt		1	BUTTON HEAD M6 x 14 mm x 1	T25	2.5 / 22	Pre-treated thread locking compound.
7	Rock guard bolt		1	FLAT HEAD M4 x 35 mm x 0.7	T20	2.5 / 22	NOTE: Inserts into motor mounting bolt. Pre-treated thread locking compound.
8-9	Motor mount bolt and washer	See motor mounting bolts					



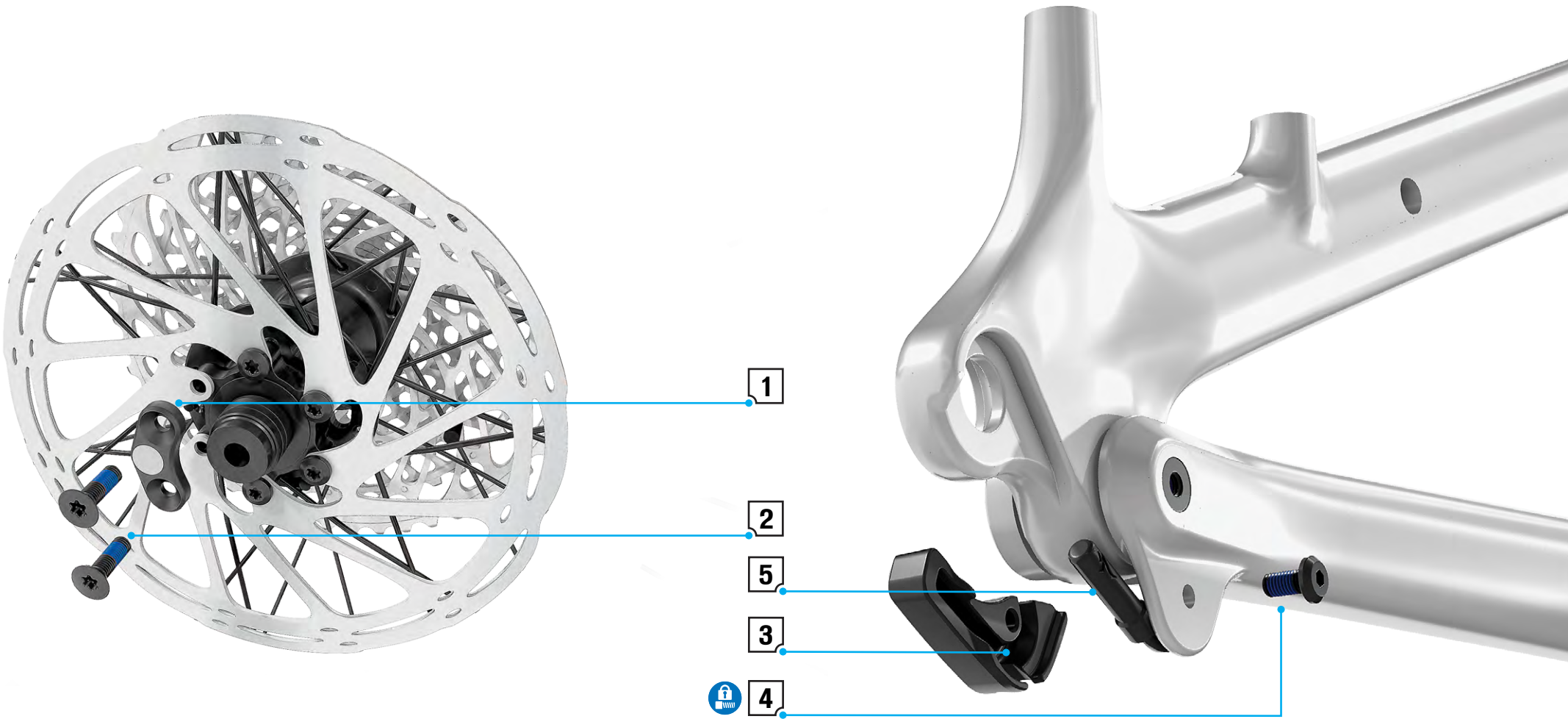
#	PART NAME	PART NUMBER	QTY	SPEC	TOOL	TORQUE (Nm / in-lbf)	COMMENT
1	SWAT™ CONCEAL CARRY MTB TOOL	53218-1170	1	NA	5 mm Hex	NA	ANCHOR BOLT FOR: SIZE 1-2: 90 mm / SIZE 3: 120 mm / SIZE 4: 135 mm / See SWAT CC User Manual (LINK).
2	Stem	TRAIL STEM	2	31.8 BAR DIA, 28.6 ST DIA, 40 LENGTH, 6 DEG, 6061-T6,BL	NA	NA	TRAIL STEM : Size 1-2 40 mm (20118-1140) Size 3-4 50mm (20118-1150)
3	Stem bolts		6	M5 x 18 x 08p	4 mm Hex	5 / 44	Pre-treated thread locking compound.
4	Stem washer (integrated)		6	M5 12.9 Split Lock Washer	NA	NA	



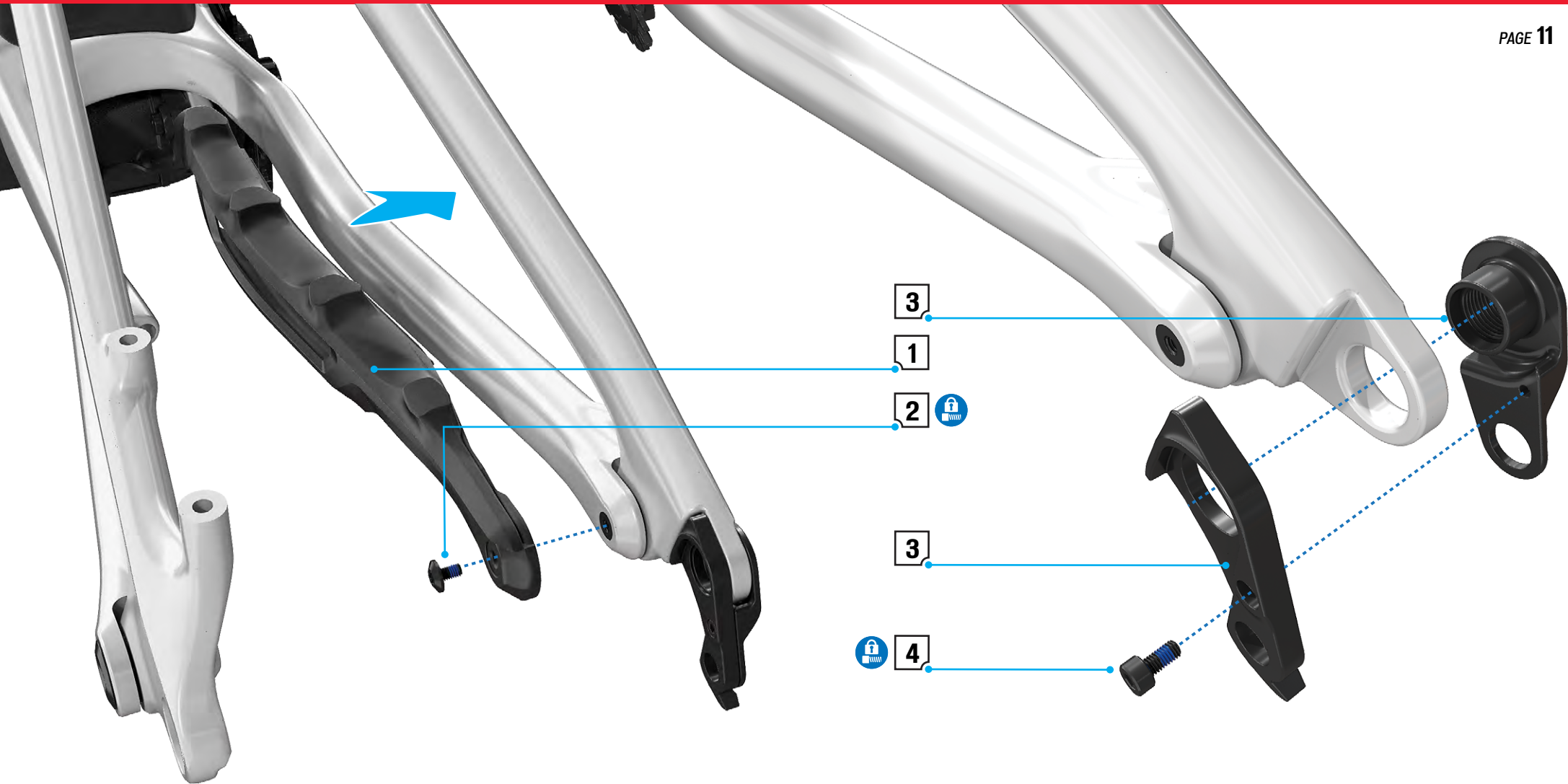
#	PART NAME	PART NUMBER	QTY	SPEC	TOOL	TORQUE (Nm / in-lbf)	COMMENT	#	PART NAME	PART NUMBER	QTY	SPEC	TOOL	TORQUE (Nm / in-lbf)	COMMENT
1	Headset spacer	S182500005	3	34 mm OD x 28.6 mm ID x 5 mm	NA	NA		7	Headtube port set screws	S206500008	2	M3 x 20 mm x 0.5 p	1.5 mm Hex	Until flush	Pre-treated thread locking compound.
2	Top Cover		1	Matt black	NA	NA		8	Headtube port screw		2	Flat Head M3 x 6 mm x 0.5 p	1.5 mm Hex	0.8 / 7	Pre-treated thread locking compound.
3	Compression ring		1	Alloy	NA	NA	Grease	9	ICR cable port DS		1	Slot and Nylon tube port	NA		
4	Upper drop in headset bearing		1	1 1/8" UPPER DROP-IN BEARINGS	NA	NA	Grease bearing	10	ICR cable port NDS		1	2 x Nylon tube port	NA		
5	Lower drop in headset bearing		1	1.5" LOWER DROP-IN BEARINGS	NA	NA	Grease bearing								
6	Crown race		1	Alloy	NA	NA	grease								



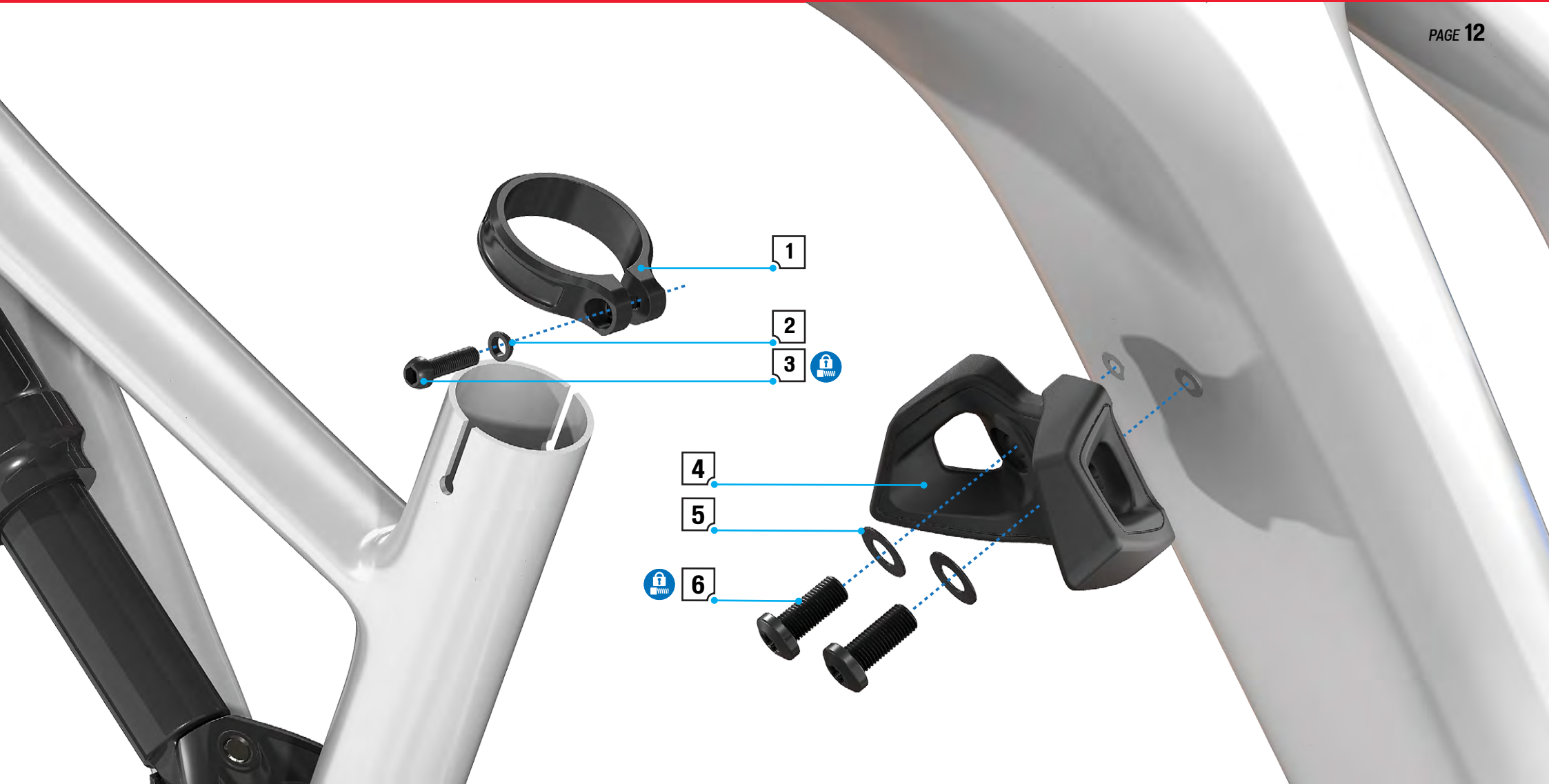
#	PART NAME	PART NUMBER	QTY	SPEC	TOOL	TORQUE (Nm / in-lbf)	COMMENT
1	Turbo Connect Unit (TCU) Screw	S206800005	1	M4 x 10 mm	T10	0.8 / 7	DO NOT OVERTIGHTEN MAX 0.8 Nm. Use thread lock
2	Turbo Connect Unit (TCU)		1	NA	NA	NA	Update firmware via USB Data cable and Turbo Studio. Replacement Battery: CR 1620, Remove with a non metallic tweezers.
3	Charge port	S209900023	1	NA	NA	NA	
4	Charge port screws		4	2.5 x 14 x ST	T8	NA	Self threading screw



#	PART NAME	PART NUMBER	QTY	SPEC	TOOL	TORQUE (Nm / in-lbf)	COMMENT
1	6 bolt rotor mount speed sensor magnet assembly	Speed sensor magnet kit S194200016	1	6 bolt version	NA	NA	Keep the magnet free of dirt and debris.
2	Speed sensor mounting bolts		2	M5 x 16 mm x 0.8 p	T25	6.2 / 56	
3	Speed sensor cover	Speed sensor cover kit S196800019	1	NA	NA	NA	
4	Speed sensor cover mounting screw		1	M4 x 8 mm x 0.7p	2.5 mm HEX	1 / 9	MAKE SURE THE BOLT IS ALIGNED. DO NOT CROSS THREAD. Pre-treated thread locking compound.
5	Speed sensor		1	NA	NA	NA	



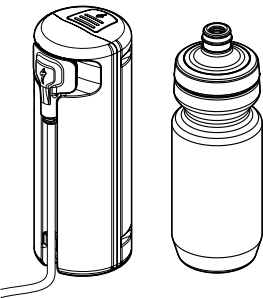
#	PART NAME	PART NUMBER	QTY	SPEC	TOOL	TORQUE (Nm / in-lbf)	COMMENT
1	Chainstay protector	S186900003	1	NA	NA	NA	
2	Chainstay protector mounting screw		1	M4 x 7 mm x 0,7p	T25	0.8 / 7	Pre-treated thread locking compound.
3	Derailleur hanger	S172600001	1	NA	NA	NA	DERAILLEUR HANGER, MTB/ROAD LONG - SANDWICH HANGER
4	Derailleur hanger mount screw		1	M3 x 6 mm x 0,5	2.5 mm Hex	0.8 / 7	Pre-treated thread locking compound.



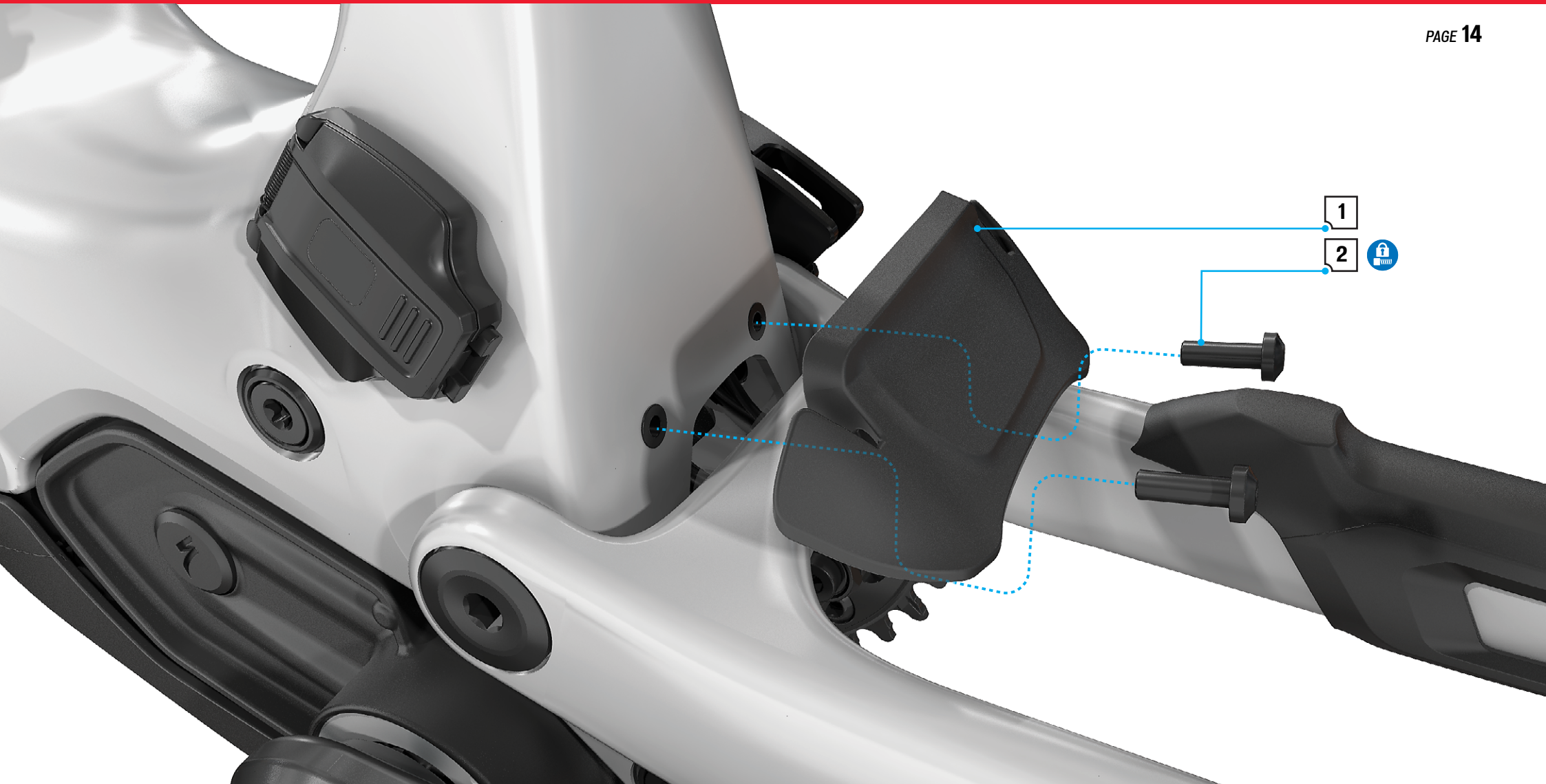
#	PART NAME	PART NUMBER	QTY	SPEC	TOOL	TORQUE (Nm / in-lbf)	COMMENT
1	Seatpost clamp	S184700004	1	38.6 mm diameter	NA	NA	
2	Seatpost clamp washer		1	M5 x 5.1 ID x 7.87 OD	NA	NA	
3	Seatpost clamp bolt		1	M5 x 18 mm x 0.8	4 mm Hex	6.2 / 55	Pre-treated thread locking compound.
4	Bump stop	S199900073	1	Small and medium frame only	NA	NA	
5	Fork bumper bolt		2	M5 x 14 mm x 0.8 p (pressed on washer)	T25	3 / 27	Pre-treated thread locking compound.



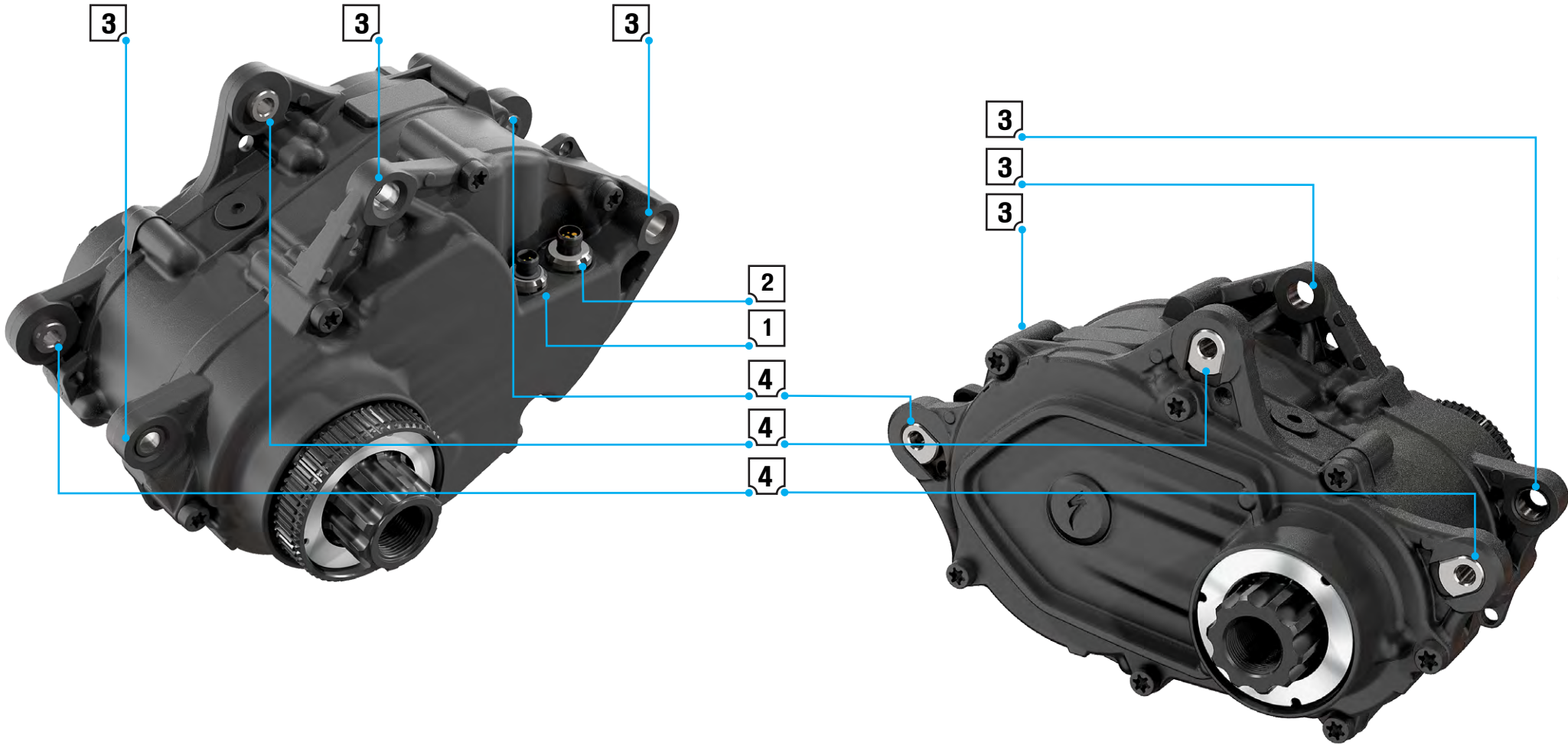
DOWNTUBE BOTTLE CAGE



#	PART NAME	PART NUMBER	QTY	SPEC	TOOL	TORQUE (Nm / in-lbf)	COMMENT
1	Zee Cage (Right)	43014-2114	1	NA	NA	NA	
2	Bottle Cage Bolt		2	M5 x 10 mm	3 mm HEX	2.8 / 25	Use spacers on upper and lower downtube water bottle bolts
4	Bottle Cage Spacer		2	OD 10 mm ID 6.2 mm H 2 mm	NA	NA	Spacers must be used with all water bottle cages on the down tube to avoid damage to the battery case.



#	PART NAME	PART NUMBER	QTY	SPEC	TOOL	TORQUE (Nm / in-lbf)	COMMENT
1	Rubber trail mud flap	S194200048	1	NA	NA	NA	
2	Rubber trail mud flap bolt		1	M4 x 12 mm x 0.7 p	2.5 mm HEX	1 / 9	Use thread lock.



#	PART NAME	PART NUMBER	QTY	SPEC	TOOL	TORQUE (Nm / in-lbf)	COMMENT
1	Speed Sensor Connector	S196800016	0	NA	NA	NA	See wiring technical guide
2	Main Harness Connector		0	NA	NA	NA	See wiring technical guide
3	Threaded Inserts		0	NDS Motor mount threads	NA	NA	
4	Removable threaded inserts		3	DS Motor mount threads	NA	NA	